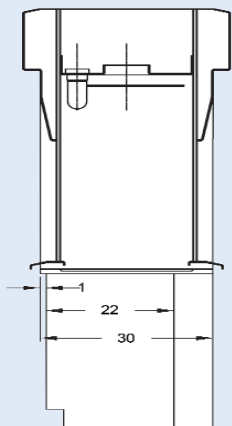


UniFlow Dual Entry Fume Hoods

Dual Entry Air By-Pass Hoods are ideal for demonstrations or applications where observation and access is required from both sides of the fume hood.

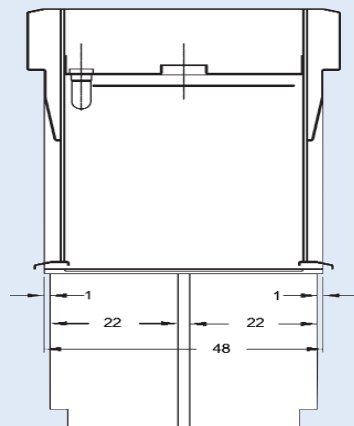


UniFlow Dual Entry Fume Hood #12270 with optional electrical, worksurface, base cabinet and vertical-moving sash. HEMCO recommends all fume hoods be equipped with an airflow monitor



SIDE VIEW

Base Cabinet 30" Deep



SIDE VIEW

Base Cabinet 48" Deep

Dual Entry Fume Hoods are available with optional worksurface and support cabinets. The 30" deep model would require a standard cabinet with a finished rear panel assembly. The 48" deep model would require two cabinets back-to-back, allowing cabinet access from both sides. See page 21.

Designed for a Variety of Applications

Dual Entry Fume Hoods are available in 48", 60", 72" and 96" wide models in either 30" or 48" depths. They can be positioned on an island or peninsular locations. Dual Entry hoods can also be located on a common wall of two rooms with accessibility from either room.

Ideal for Group Observation

The unique design of the UniFlow Dual Entry Hood with safety glass sashes front and back allows groups of observers a clear view as well as easy access to procedures.

Convenient plumbing and electrical locations are available on both sides of the fume hood while providing safe containment for laboratory processes.

COMPLETE YOUR FUME HOOD INSTALLATION

Designed to offer the complete solution to laboratory ventilation concerns. Integrated components, including fume hoods, filters, blowers, ducting, electrical services, plumbing options and base cabinets work together to provide a safe, efficient fume hood system.

Refer to HEMCO's PLAN-A-HOOD on page 26 to assist in the planning of your UNIFLOW Fume Hoods.

OPTIONAL ACCESSORIES

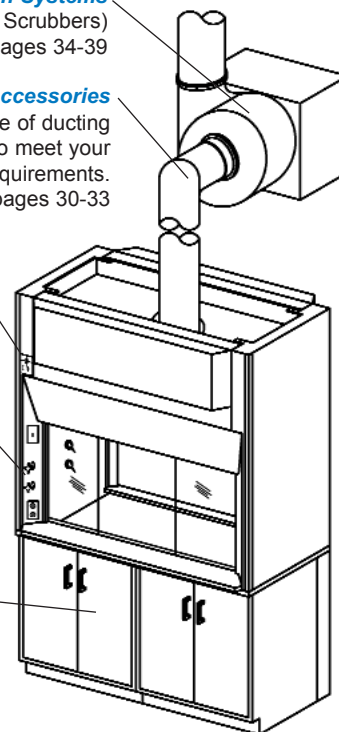
Ventilation Systems
(Blowers, Filters, Scrubbers)
see pages 34-39

Ducting and Ducting Accessories
HEMCO offers a full line of ducting accessories to meet your specific requirements.
see pages 30-33

Airflow Monitors and Sash Stop
see page 21

Plumbing and Electrical Services
Factory installed according to your exact specifications
see pages 27-28.

Base Cabinets
see pages 20-21



UNIFLOW Dual Entry Fume Hoods

SPECIFICATIONS		FUME HOOD WIDTH			
		48"	60"	72"	96"
1. Dual Entry Bypass Hood 30" Depth. Superstructure to be modular composite chemical resistant FRP non-metal construction. Interior fume chamber to be glass smooth with bell shaped exhaust collar. Picture frame sash opening in front with (4) horizontal moving sashes constructed of clear tempered safety glass with chemical resistant PVC framing, track. Can be shipped knocked down for onsite erection. Vapor-proof light fixture and switch prewired to single point junction box, 115 volt, 60Hz AC, All electrical components UL Listed.		Cat. No. 12140	Cat. No. 12150	Cat. No. 12160	Cat. No. 12180
2. Dual Entry Bypass Hood 48" Depth. Superstructure to be modular composite chemical resistant FRP non-metal construction. Interior fume chamber to be glass smooth with bell shaped exhaust collar. Picture frame sash opening in front with (4) horizontal moving sashes constructed of clear tempered safety glass with chemical resistant PVC framing and track. Can be shipped knocked down for onsite erection. Vapor-proof light fixture, switch prewired to single point junction box, 115 volt, 60Hz AC, All electrical components UL Listed. Same as #1 above except with (2) vapor-proof light fixtures and overall depth is 48"		Cat. No. 12240	Cat. No. 12250	Cat. No. 12260	Cat. No. 12280
3. Vertical Moving Sash Option - Add suffix to catalog number.		VS-4	VS-5	VS-6	VS-8
WORKSURFACES - Sized to fit Dual Entry Hoods					
4. Epoxy Resin work surface: ideal for high concentrations of solvents, acids and alkalis. Excellent scratch and wear resistance. Dished to contain spillage. 1 1/4" thick, color – black.	30" deep worksurface	Cat. No. 20435	Cat. No. 20535	Cat. No. 20635	Cat. No. 20835
	48" deep worksurface	Cat. No. 20445	Cat. No. 20545	Cat. No. 20645	Cat. No. 20845
BASE CABINETS					
5. Base Cabinet Assembly: consists of cabinets and filler panels of top grade welded furniture steel. Cabinets include two hinged doors. See diagram page 20.	30" deep - cabinet access from one side only	Cat. No. 50430	Cat. No. 50530	Cat. No. 50630	Cat. No. 50830
	48" deep - cabinet access from both sides	Cat. No. 50448	Cat. No. 50548	Cat. No. 50648	Cat. No. 50848

UNIFLOW DUAL ENTRY FUME HOODS

FUME HOOD SIZES							
A	48"	60"	72"	96"			
B	37-3/4"	49-5/8"	60-3/4"	84-3/4"			
C	24"	30"	36"	42"			
D	10"	10"	12"	(2)10"			
E	30"	48"	30"	48"	30"	48"	30"
F	24"	42"	24"	42"	24"	42"	24"

EXHAUST AIR VOLUME REQUIRED FOR 100 FPM WITH 2 SASHES OPEN ON ONE SIDE			
48"	60"	72"	96"
385 CFM	474 CFM	592 CFM	807 CFM

AIRFLOW MONITOR

Cat. No. 51406

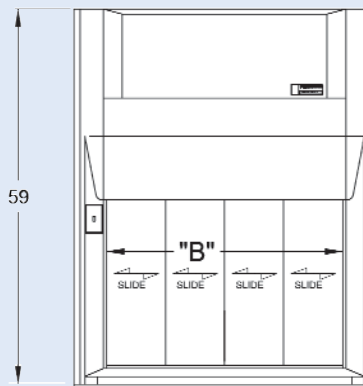
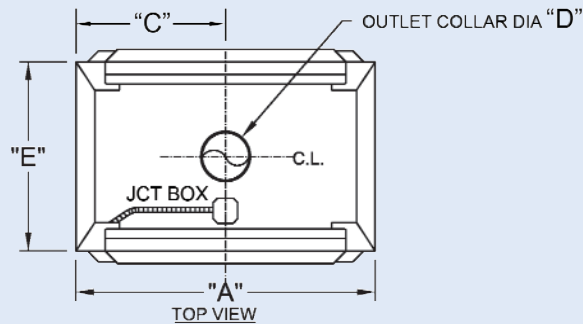
Continuously monitors face velocity airflow of fume hood. Select and calibrate at desired FPM velocity set point. If the hood face velocity falls below the set point, an audible alarm sounds and a visual red indicator light appears. Airflow alarm is factory installed or can be field installed. 115 volt 60Hz



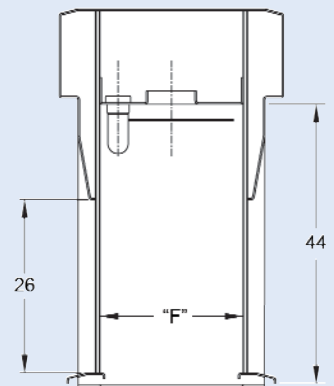
SAFETY SASH STOP

Cat. No. 51651

Factory installed to specified designated height. Also available for field installation.



FRONT OR REAR VIEW



SECTIONAL VIEW