



Bosch/H&K
GKF 330/400
Capsule filling machine
Replacement spare parts

INTERNATIONAL INVENTORY MANAGEMENT

456 MANNING AVENUE
ELON, NC 27244 USA
TEL 001 336 584 4777
FAX 001 336 584 4950

410 NORTH 1650 WEST
SPRINGVILLE, UT 84663 USA
TEL 001 801 491 7022
FAX 001 801 491 7014

www.iimnc.com

revised 11/11

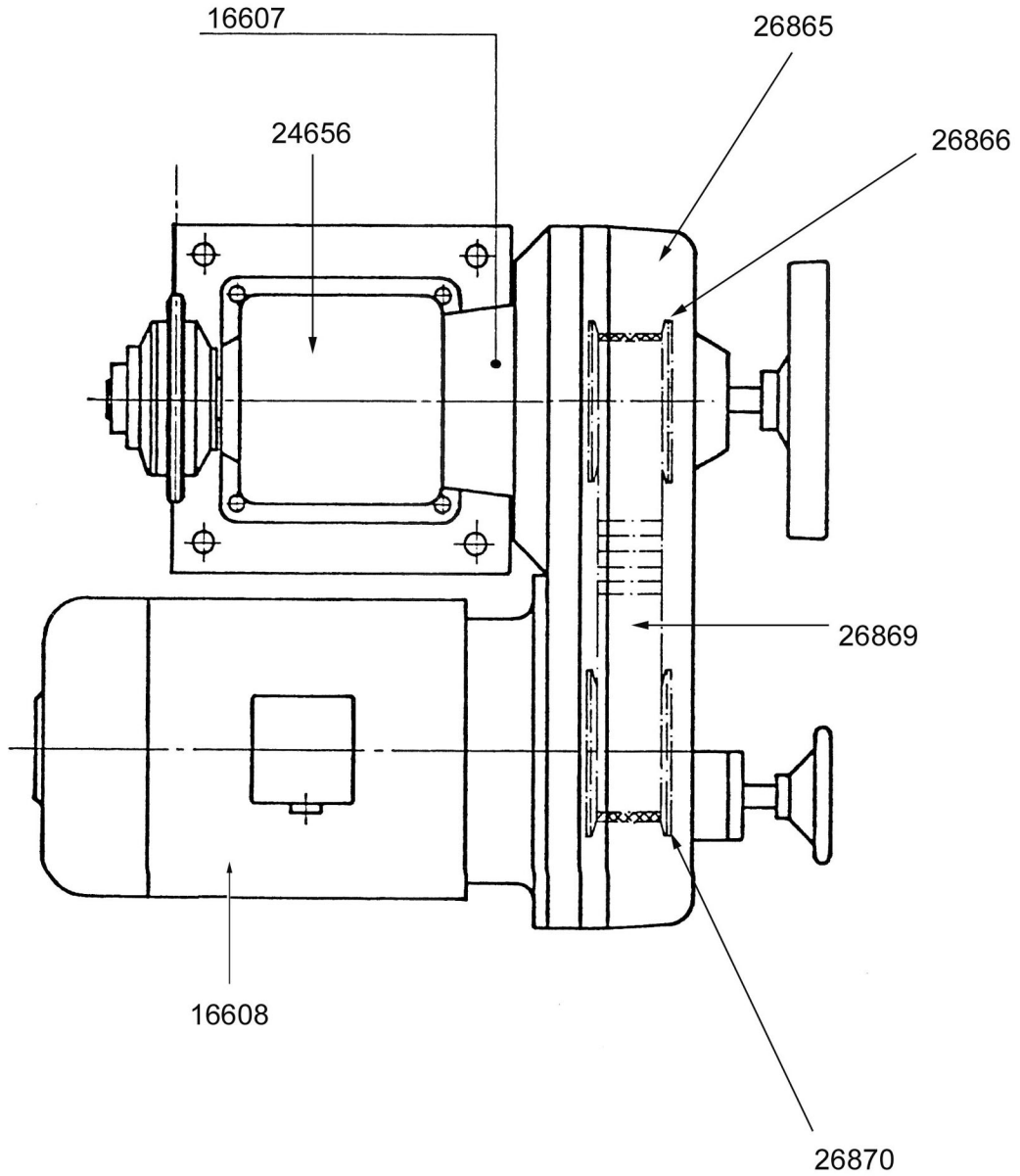
OEM names and part numbers are used to identify replacement parts. Our products are not affiliated with, sponsored or approved by the original equipment manufacturer.

Table of Contents

H&K 330/400

Section	Description
1	Main drive
2	Support, main shaft
3	Drive, sorting
4	Drive, capsule separation
5.1	Drive, tamping
5.2	Drive, tamping
6	Drive, faulty capsule
7	Drive, closing
8	Drive, ejection
9	Segment top cam
10	Segment carriers
11	Segment indexing gearbox
12	Tamping ring
13	Magazine housing
14.1	Capsule separation
14.2	Capsule separation
15	Dosing device/powder level sensing
16	Tamping head/guide ring
17	Powder infeed
18	Powder transfer unit
19	Faulty capsule ejection
20	Closing
21	Ejection
22	Vacuum system with filter
23	Blowout and cleaning
24	Drive, additional equipment, before powder station
25	Drive, additional equipment, after powder station
26.1	Size parts: segment blocks
26.2	Size parts: sorting
26.3	Size parts: tamping pins
27	Cam box
28	Cam plan

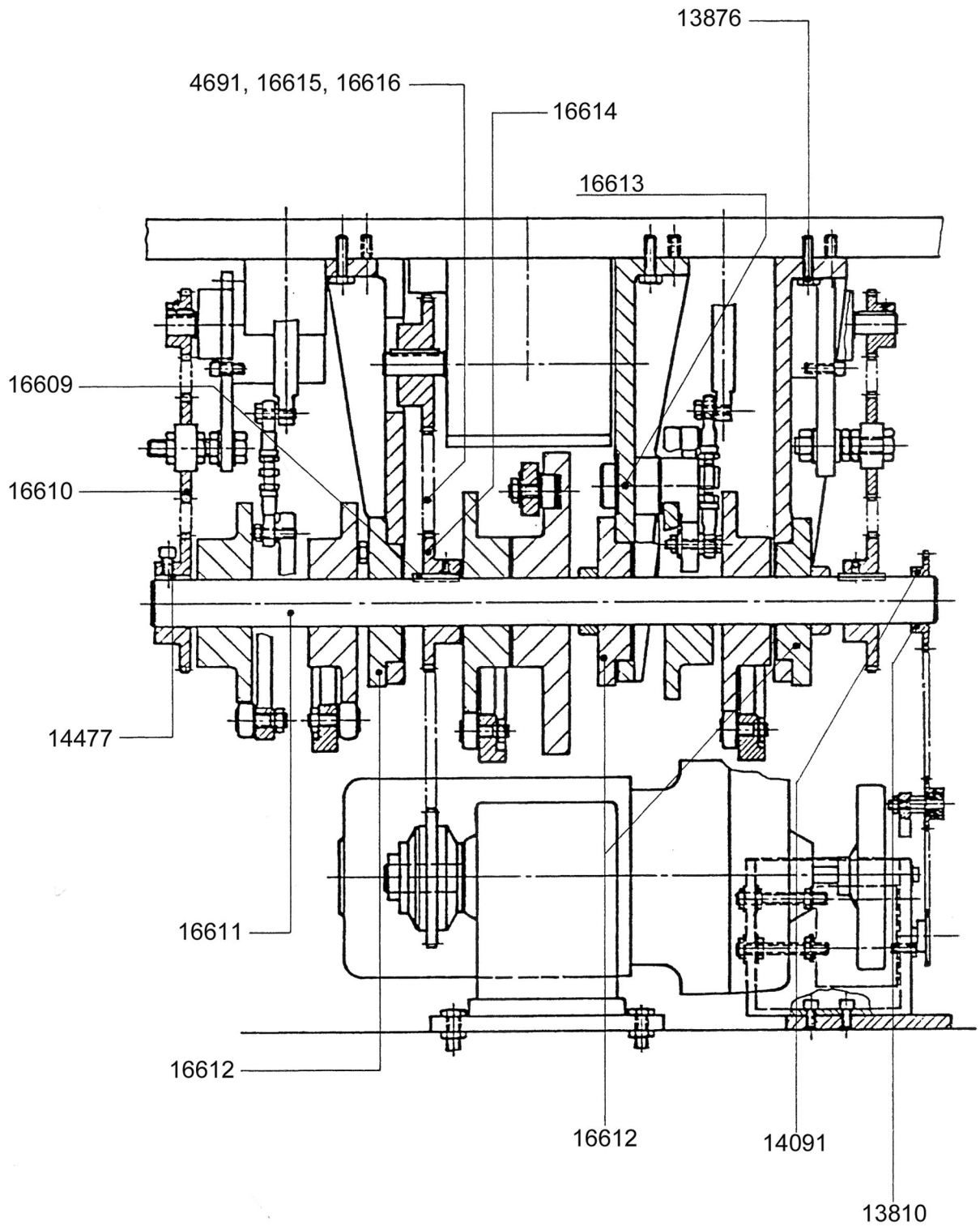
Section 1: main drive motor



Section 1: Main drive motor

IIM No.	Description
16607	MAIN DRIVE
16608	MOTOR WITH BRAKE
24656	GEARBOX
26865	TRANSMISSION
26866	PULLEY, 14MM BORE
26869	BELT
26870	PULLEY, 19MM BORE

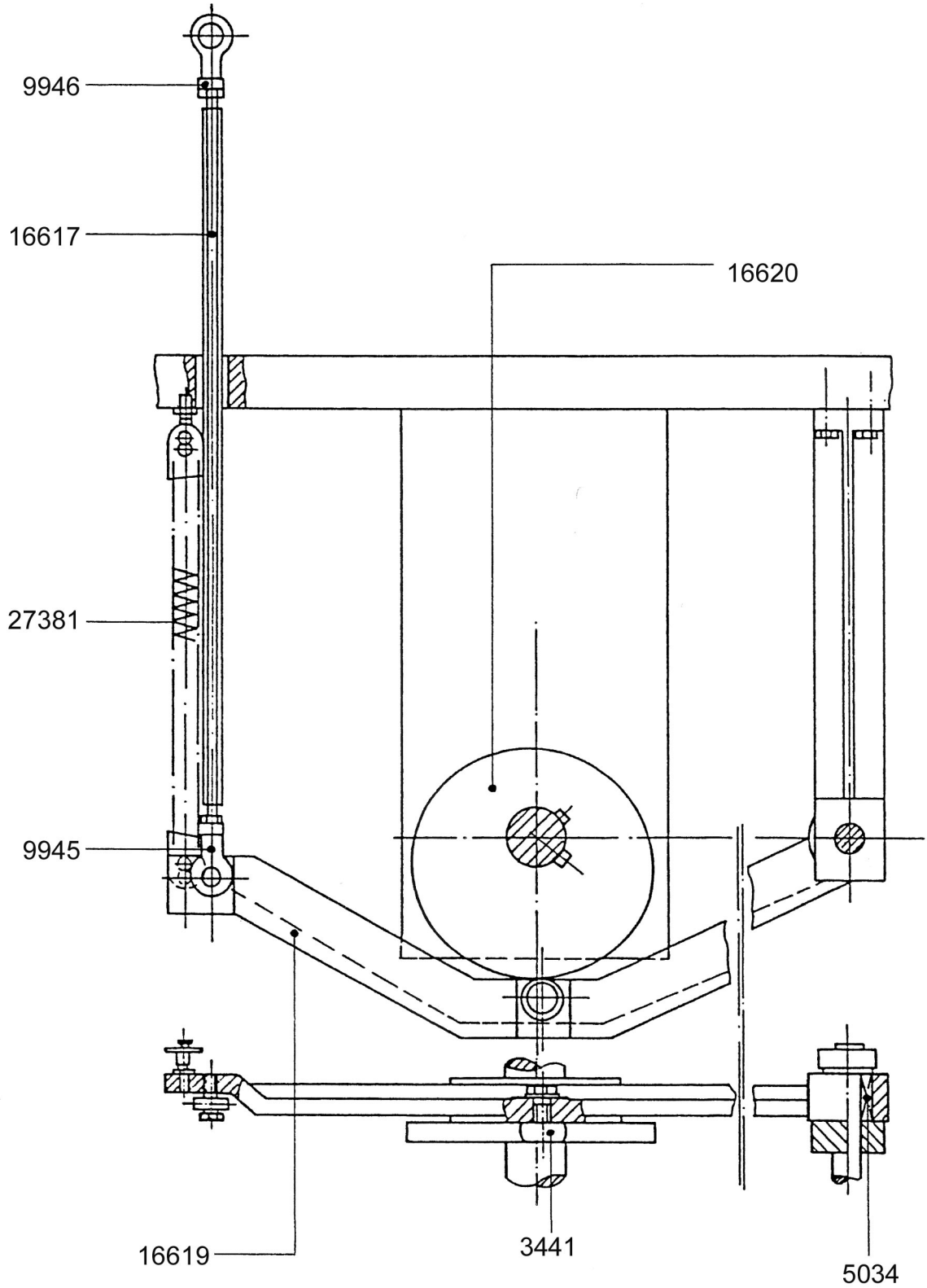
Section 2: main shaft support



Section 2: Support, main shaft

IIM No.	Description
4691	CHAIN
13810	SET SCREW
13876	WASHER,M10,SERRATED
14091	CHAIN WHEEL
14477	KEY,SLIP
16609	KEY
16610	CHAIN TENSIONER
16611	MAIN SHAFT
16612	BEARING
16613	PRESSURE PIECE
16614	SPROCKET
16615	MASTER LINK
16616	LINK

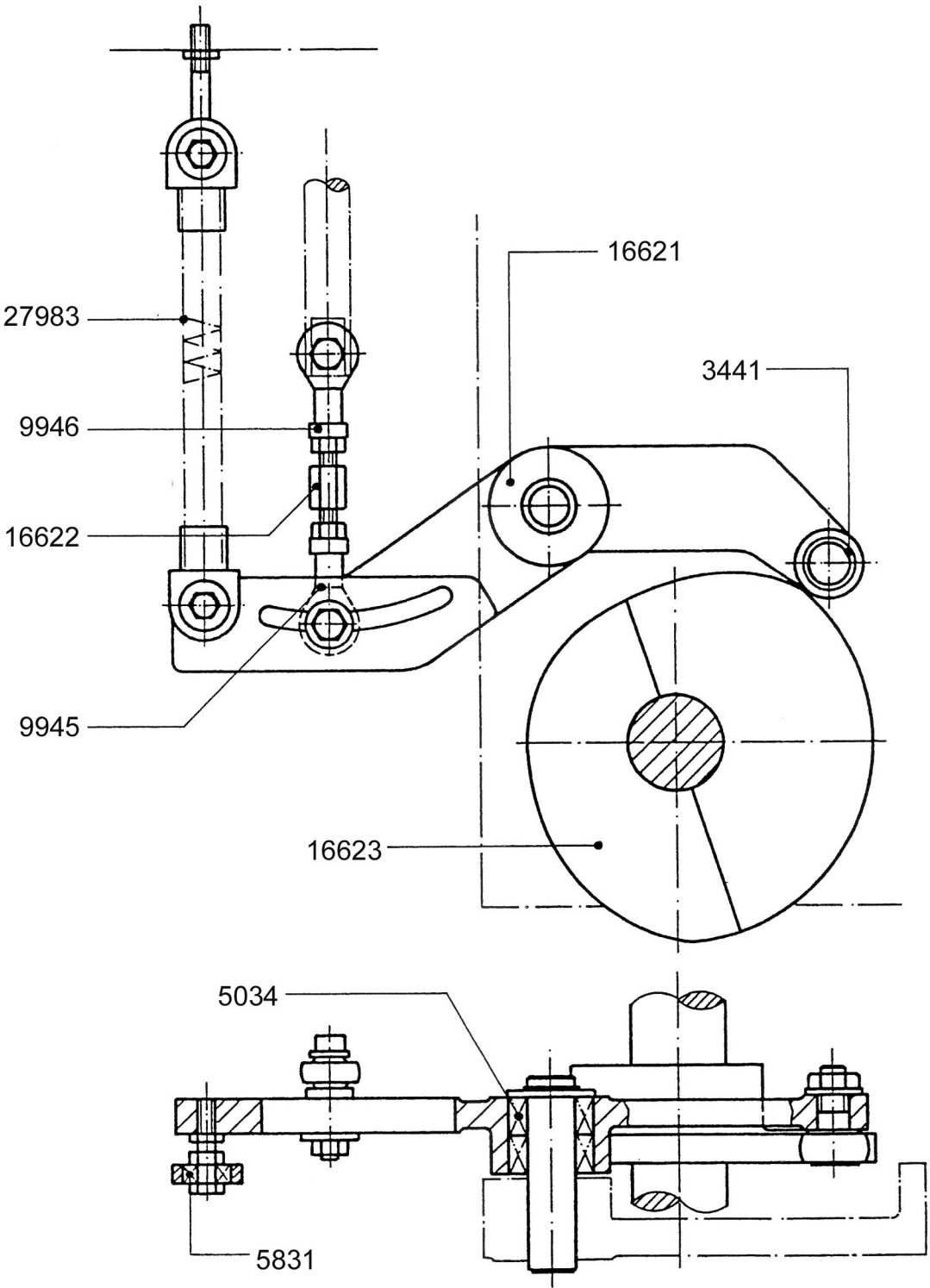
Section 3: sorting drive



Section 3: Drive, sorting device

IIM No.	Description
3441	CAM FOLLOWER
5034	BEARING
9945	ROD END
9946	ROD END
16617	CONNECTING ROD
16619	LEVER ARM
16620	CAM, SORTING
27381	SPRING, EXTENSION

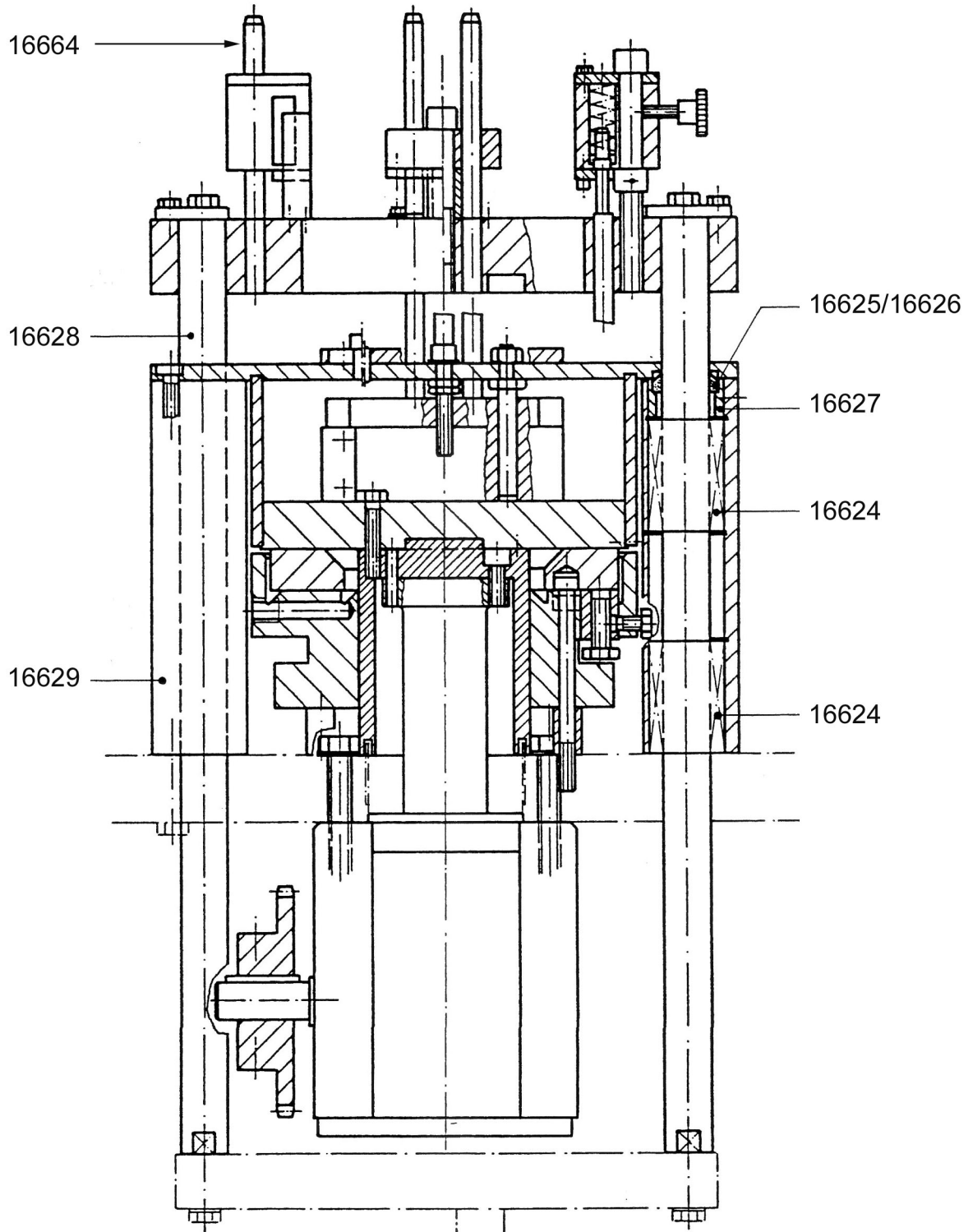
Section 4: separation drive



Section 4: Drive, separation

IIM No.	Description
3441	CAM FOLLOWER
5034	BEARING
5831	SPRING FASTENER BLOCK WITH BEARING
9945	ROD END
9946	ROD END
12888	SPRING,EXTENSION
16621	LEVER ARM
16622	TURNBUCKLE
16623	CAM,SEPARATION

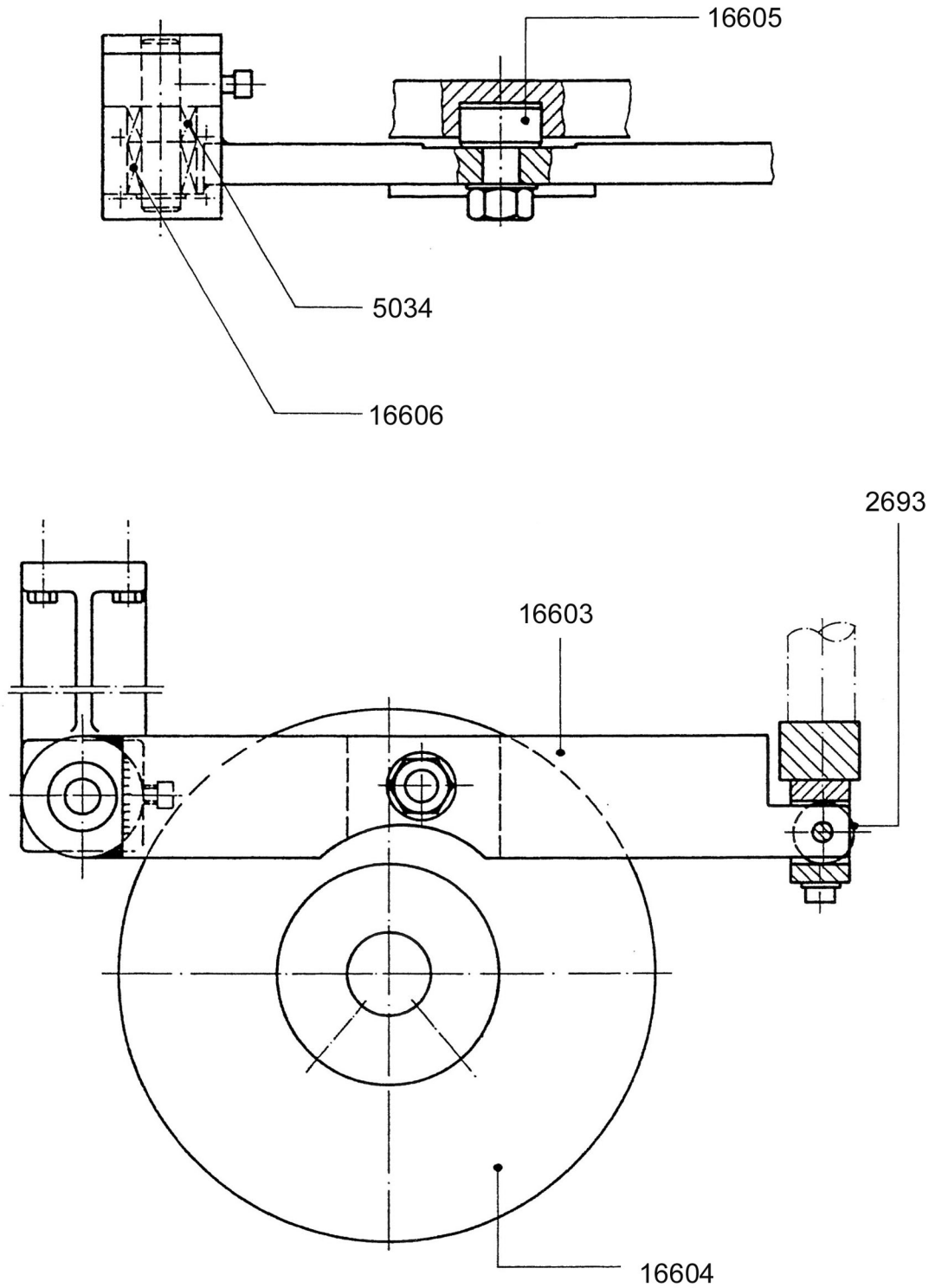
Section 5.1: tamping drive



Section 5.1: Drive, tamping unit

IIM No.	Description
16624	BEARING,LINEAR
16625	SEAL,WIPER,SINGLE LIP
16626	SEAL
16627	SPACER
16628	SHAFT,TAMPING
16629	COLUMN,TAMPING

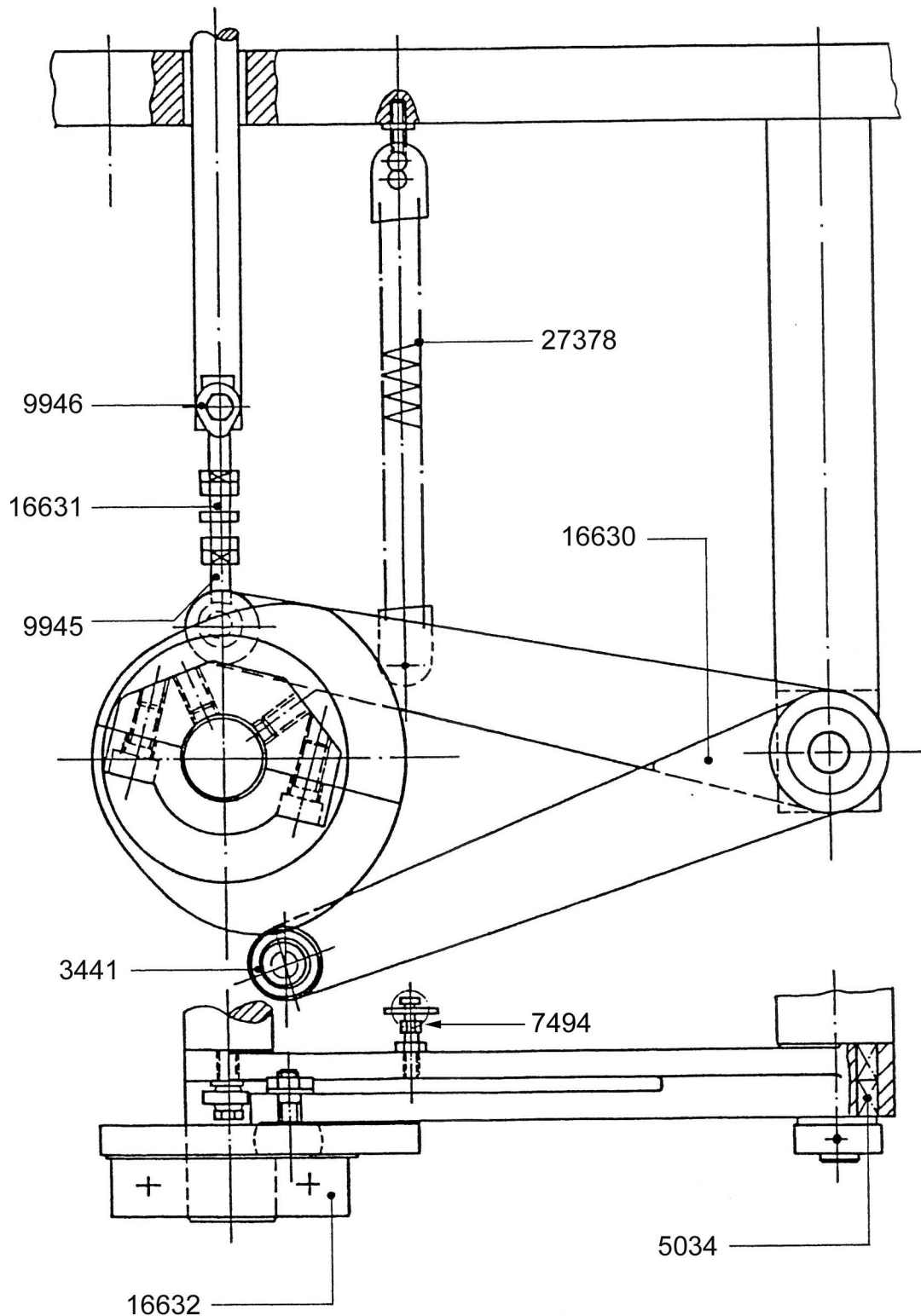
Section 5.2: tamping drive



Section 5.2: Drive, tamping unit

IIM No.	Description
2693	CAM FOLLOWER
5034	BEARING
16603	ARM,CROSS MEMBER,TAMPING
16604	CAM,TAMPING
16605	CAM FOLLOWER
16606	BEARING

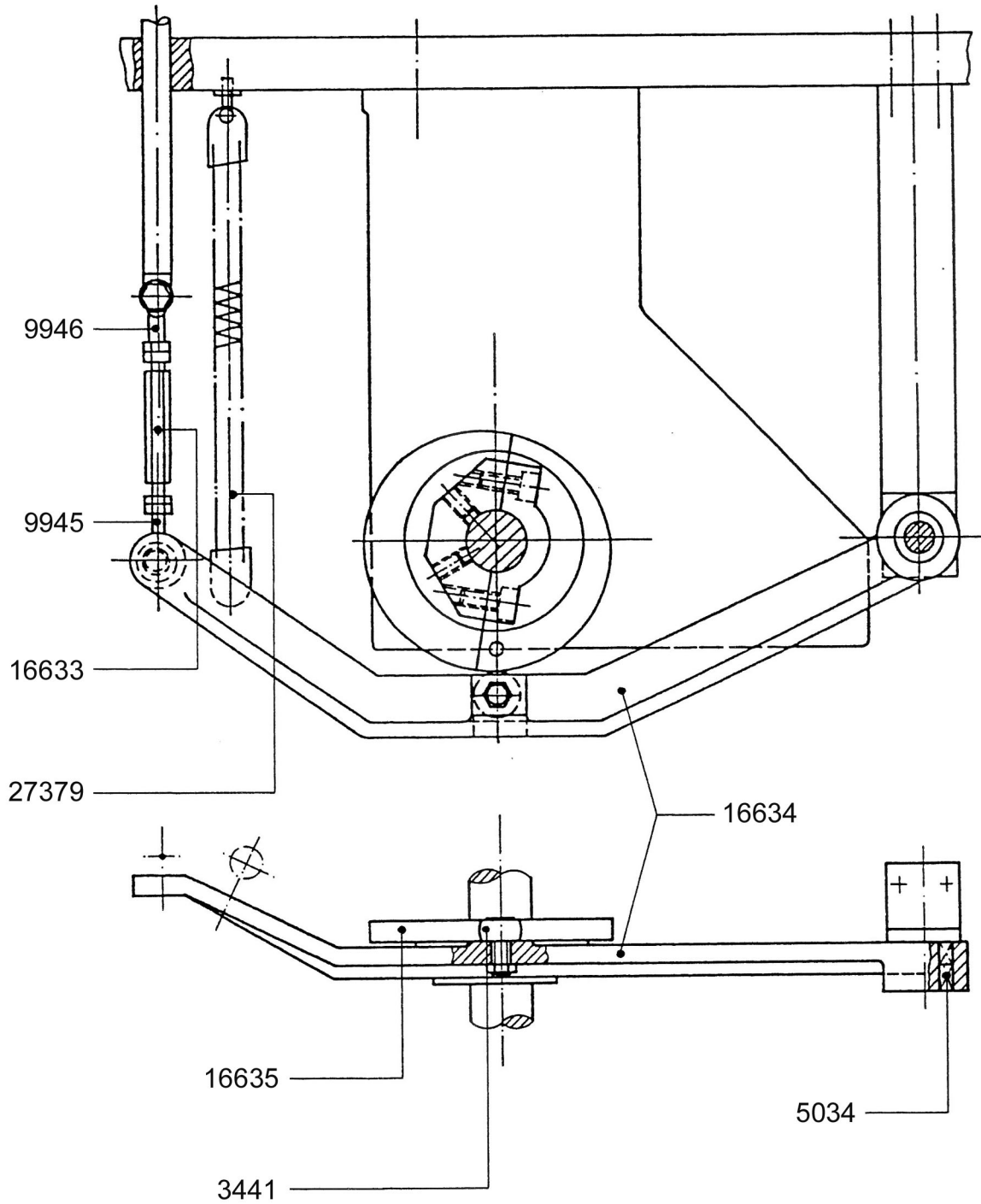
Section 6: faulty capsule drive



Section 6: Drive, faulty capsule

IIM No.	Description
3441	CAM FOLLOWER
5034	BEARING
7494	SPRING FASTENER ROD
9945	ROD END
9946	ROD END
16630	ARM,LEVER
16631	TURNBUCKLE
16632	CAM,FAULTY CAPSULE
27378	SPRING,EXTENSION

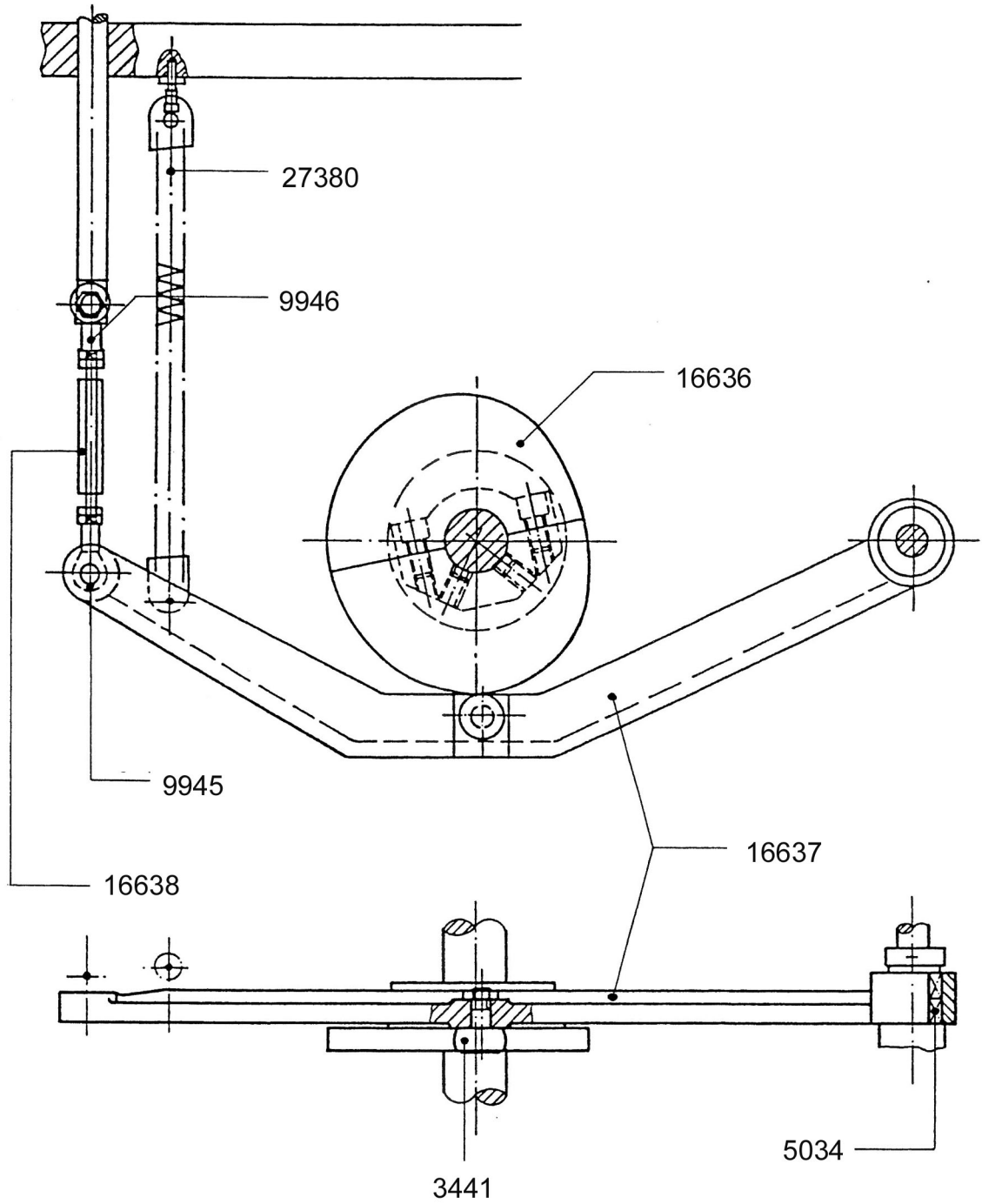
Section 7: closing drive



Section 7: Drive, closing

IIM No.	Description
3441	CAM FOLLOWER
5034	BEARING
9945	ROD END
9946	ROD END
16633	TURNBUCKLE
16634	ARM,LEVER
16635	CAM,CLOSING
27379	SPRING,EXTENSION

Section 8: ejection drive



IIM

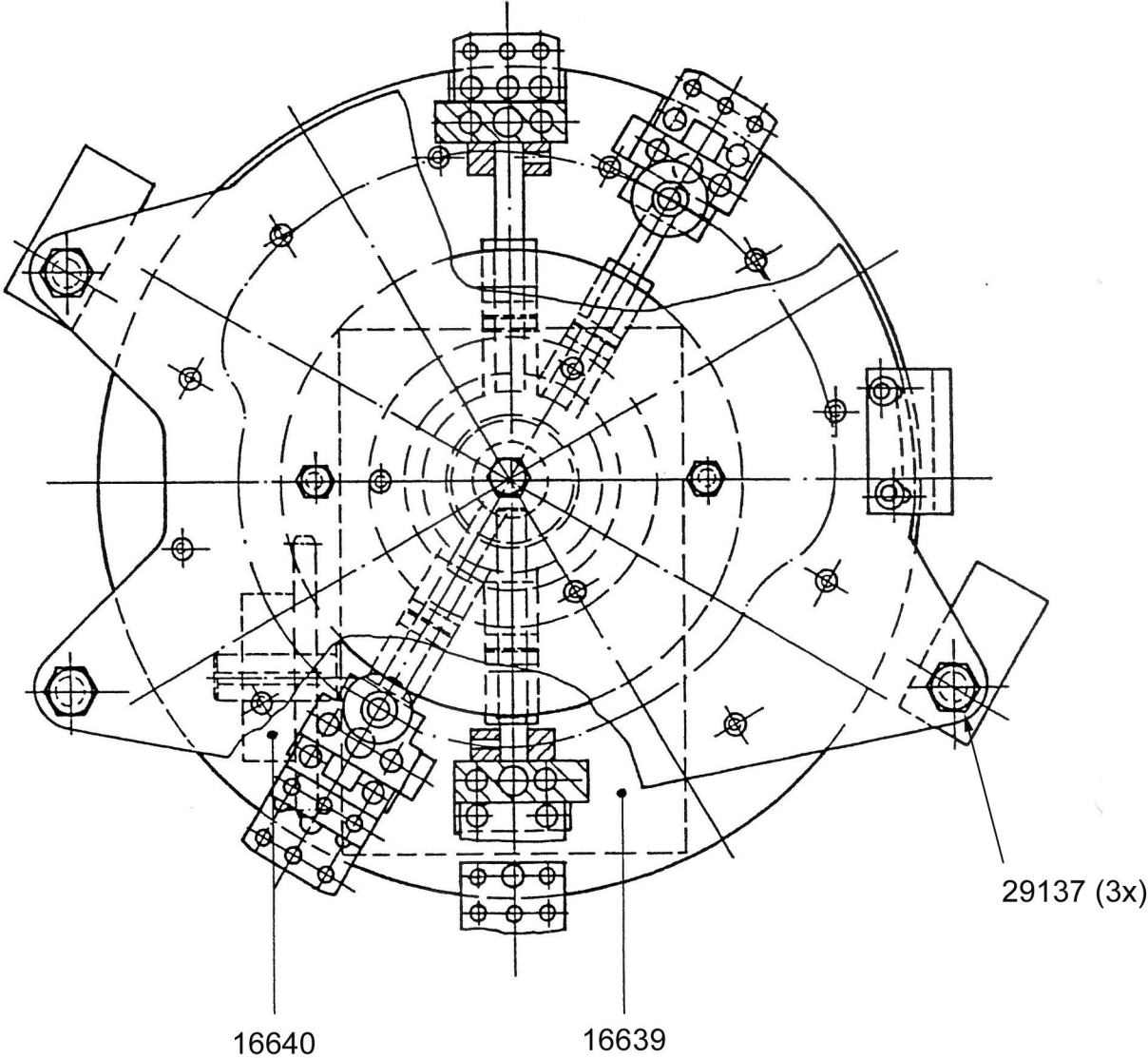
Tel (336) 584-4777

Fax (336) 584-9540

Section 8: Drive, ejection

IIM No.	Description
3441	CAM FOLLOWER
5034	BEARING
9945	ROD END
9946	ROD END
16636	CAM,EJECTION
16637	ARM,LEVER,EJECTION
16638	TURNBUCKLE,EJECTION
27380	SPRING,EXTENSION

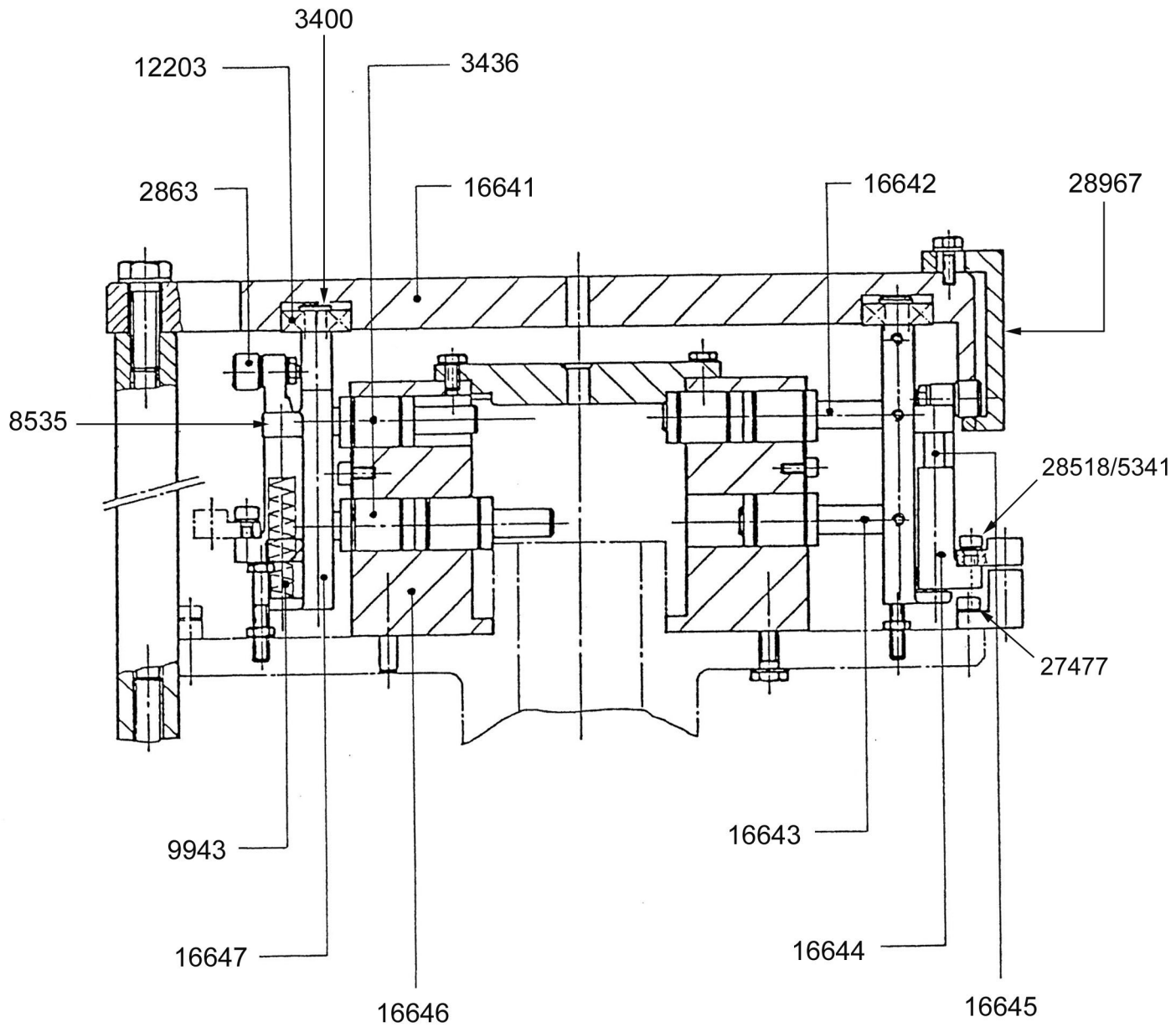
Section 9: segment indexing



Section 9: Segment indexing

IIM No.	Description
16639	GEARBOX,INDEXING,SEGMENT
16640	SPROCKET,Z=22
29137	BOLT, TOP CAM HOLD-DOWN
29138	WASHER, TOP CAM HOLD-DOWN BOLT

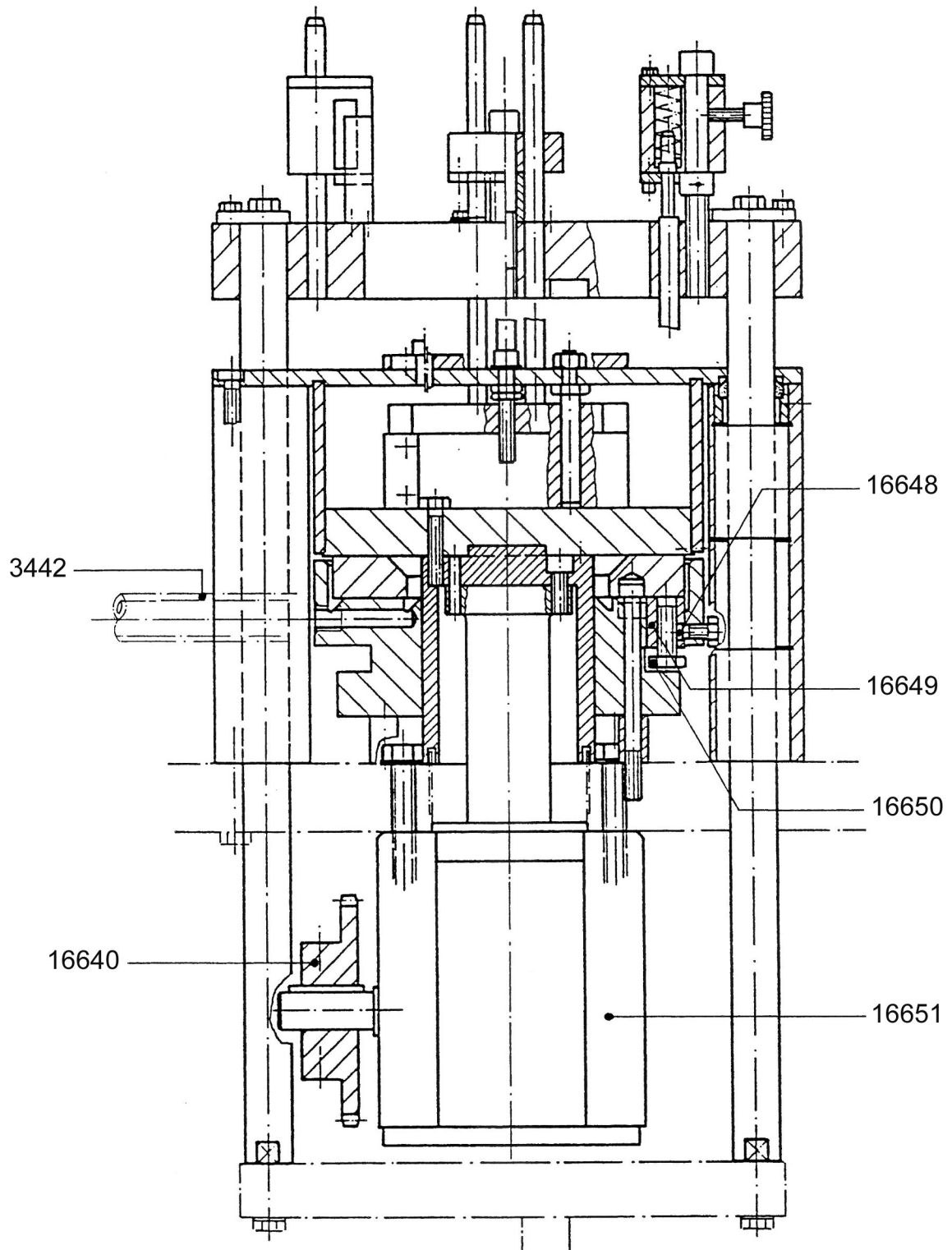
Section 10: segment carriers



Section 10: Segment carriers; top cam

IIM No.	Description
2863	CAM FOLLOWER
3400	PIN
3436	LINEAR BEARING
5341	SOCKET HEAD SCREW, UPPER SEGMENT MOUNT
8535	SPRING PIN
9943	COMPRESSION SPRING,STAINLESS
12203	BEARING
16641	TOP CAM
16642	SHAFT,GUIDE,HORIZONTAL,UPPER,SEGMENT CARRIER
16643	SHAFT,GUIDE,HORIZONTAL,LOWER,SEGMENT CARRIER
16644	SEGMENT CARRIER,UPPER
16645	SHAFT,GUIDE,VERTICAL
16646	DOUGHNUT,SEGMENT TURRET
16647	SEGMENT CARRIER,LOWER
28103	SEGMENT CARRIER, COMPLETE
28518	HEX BOLT, UPPER SEGMENT MOUNT
28967	SAFETY CAM

Section 11: dosing support



IIM

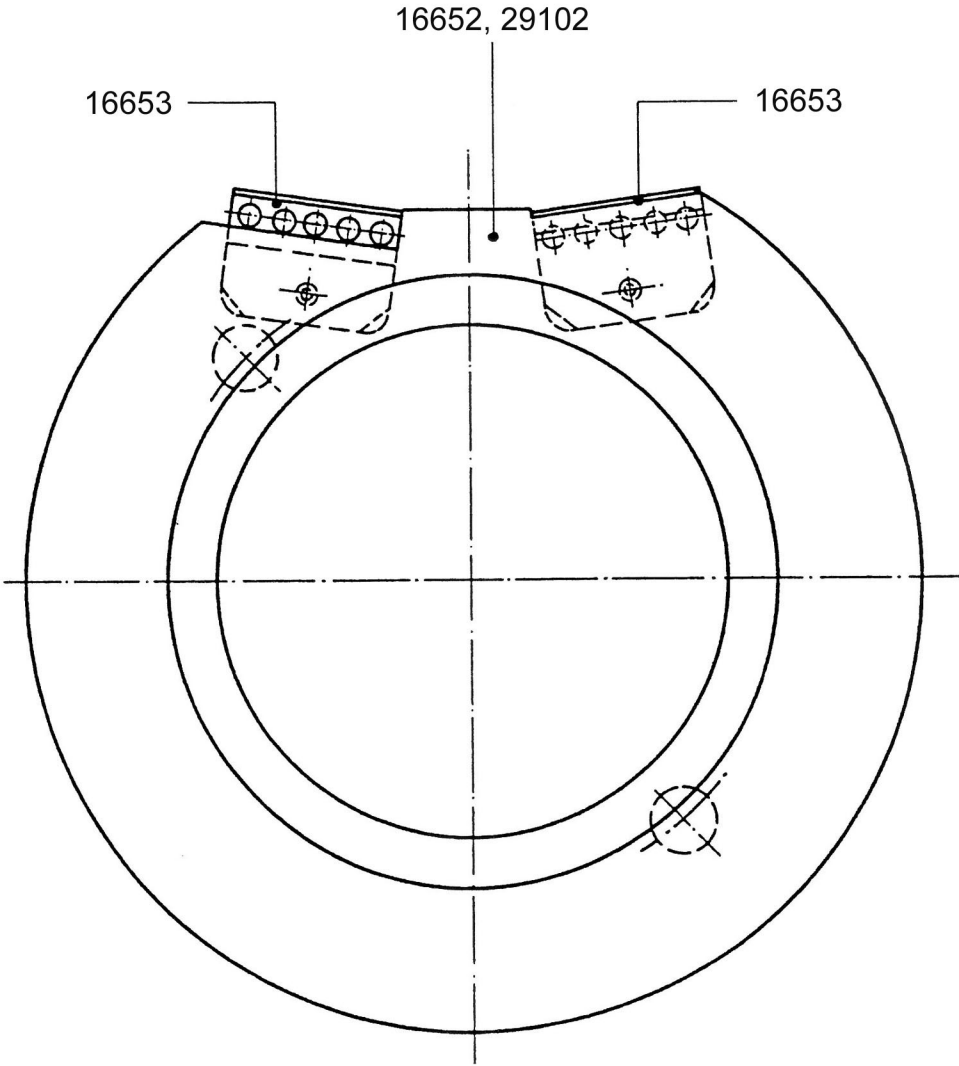
Tel (336) 584-4777

Fax (336) 584-9540

Section 11: Dosing device - support

IIM No.	Description
3442	HOSE
16640	SPROCKET,Z=22
16648	PRESSURE PIECE
16649	BUSHING
16650	BOLT,LEVELING,TAMPING RING
16651	GEARBOX,INDEXING,DOSING DRIVE

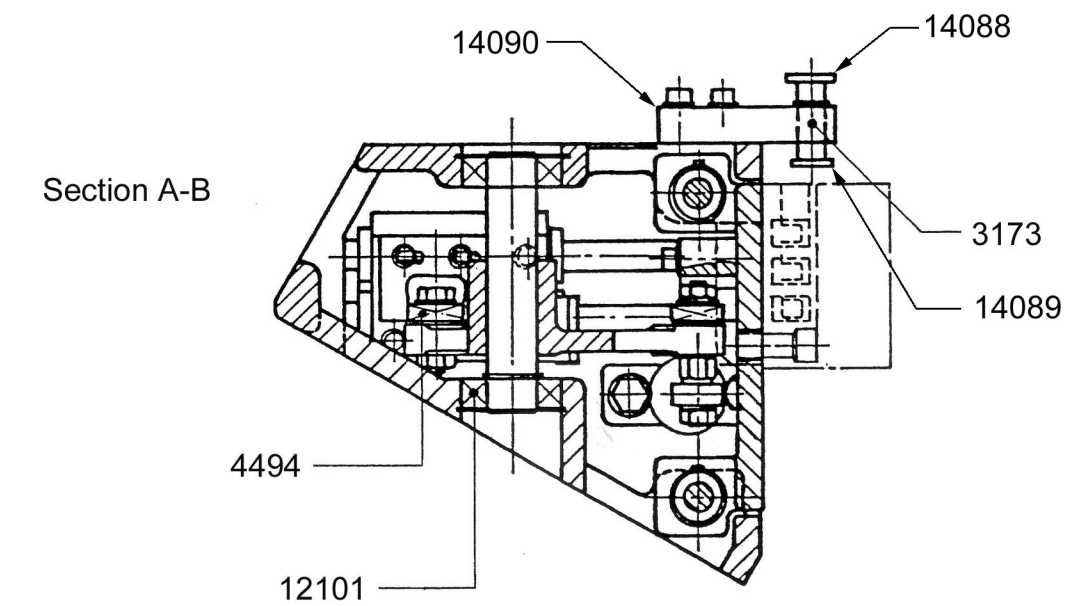
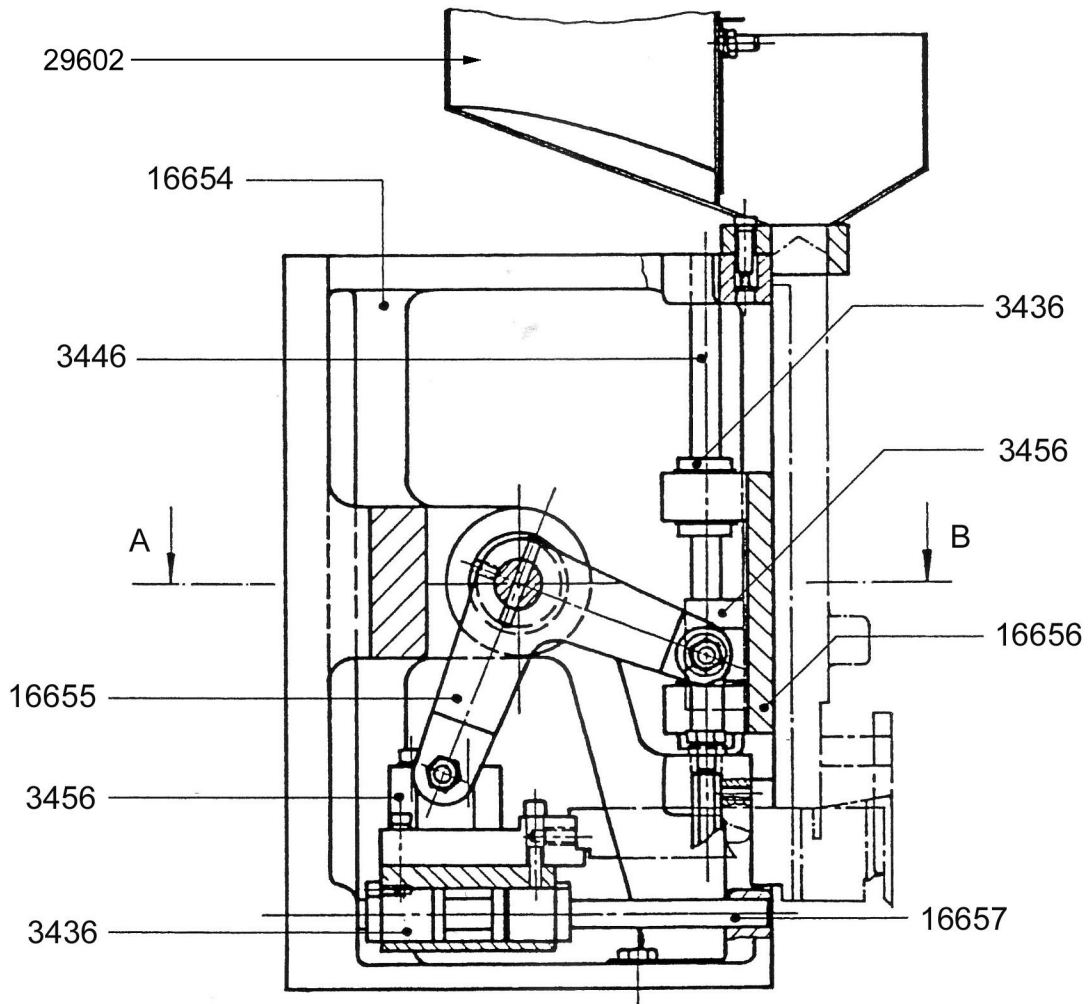
Section 12: tamping ring



Section 12: Tamping ring

IIM No.	Description
16652	TAMPING RING,BRONZE
29102	TAMPING RING,FDA PLASTIC
16653	SCRAPER,TAMPING RING

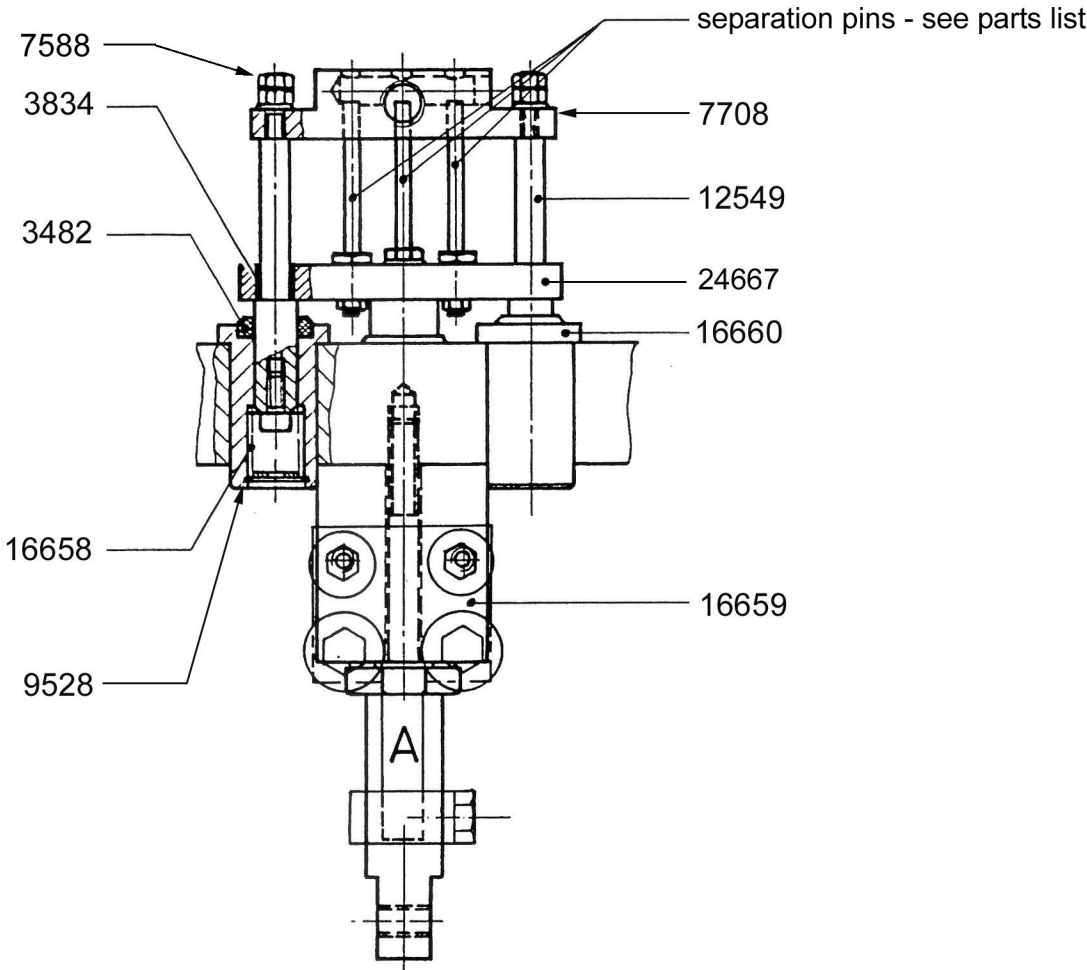
Section 13: sorting device



Section 13: Magazine housing

IIM No.	Description
3173	PLUNGER,BALL SPRING,STAINLESS
3436	LINEAR BEARING
3446	SHAFT,SLIDING,SORTING
3456	GUIDE,BLOCK,MAGAZINE RECIPROCATOR,2 PER MAG. FRAME
4494	BEARING
12101	BEARING
14088	KNURLED NUT
14089	BOLT
14090	SUPPORT BLOCK
16654	HOUSING,SORTING STATION
16655	ARM,SORTING
16656	CARRIAGE,SORTING STATION
16657	GUIDE SHAFT,HORIZONTAL
23163	SCREW,MOUNT,SORTING FINGERS
27159	SCREW,MOUNT,ORIENTATION BLOCK
29602	CAPSULE HOPPER

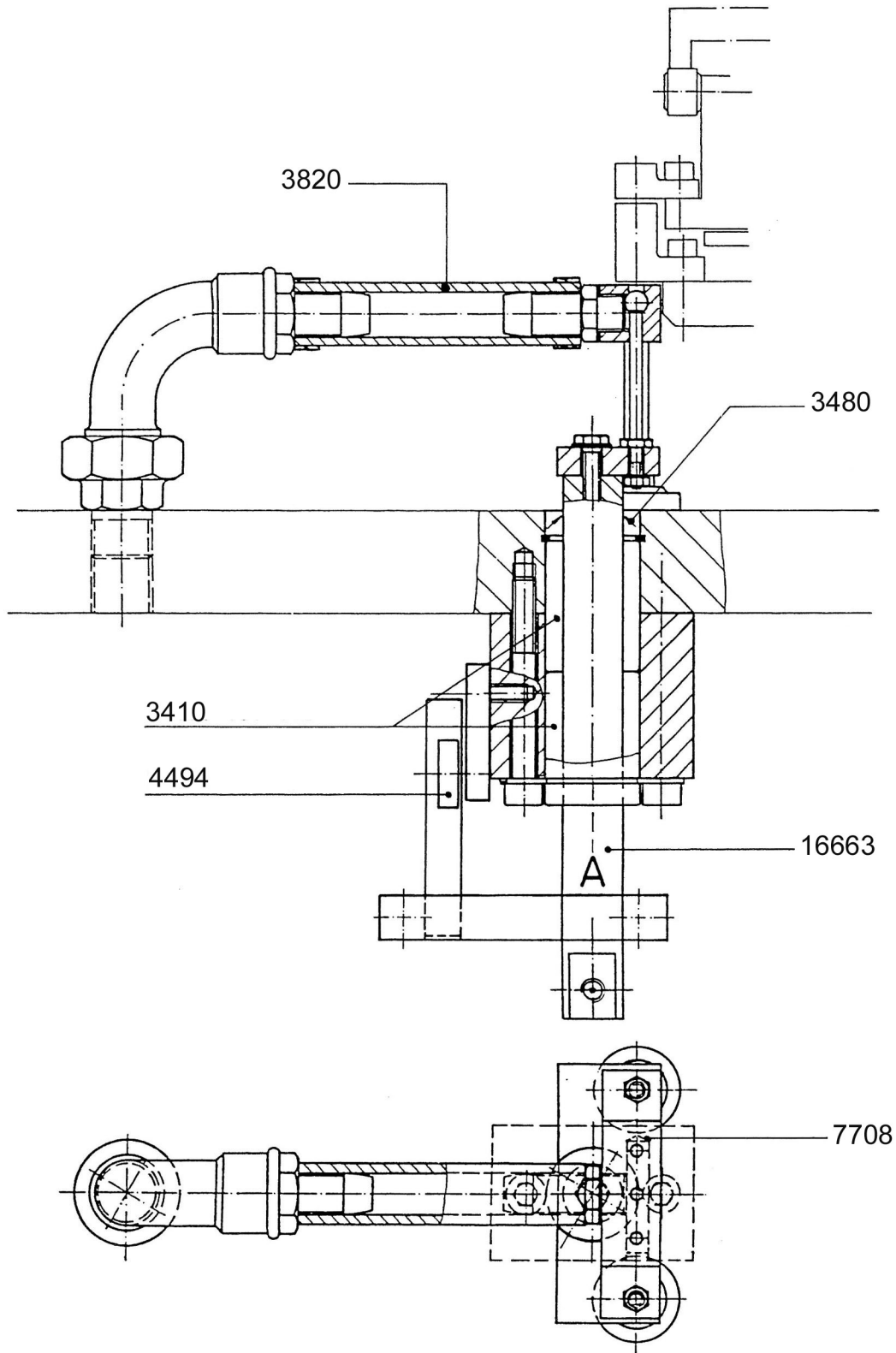
Section 14.1: separation



Section 14.1: Capsule separation

IIM No.	Description
3482	SEAL RING
3834	BUSHING
5658	PIN,SEPARATION,FLAT,OLD STYLE,67MM
7588	SHOULDER BOLT,GUIDE COLUMN
7708	SUCTION SHOE, 3 COUNT
9528	RETAINING RING
12549	GUIDE COLUMN (REQUIRES P/N 7588)
15317	PIN,SEPARATION,CONCAVE,NEW STYLE,57MM
15318	PIN,SEPARATION,CONCAVE,OLD STYLE,61MM
16658	SPRING,COMPRESSION
16659	GUIDE PIECE
16660	BUSHING
24667	SEPARATION PLATE

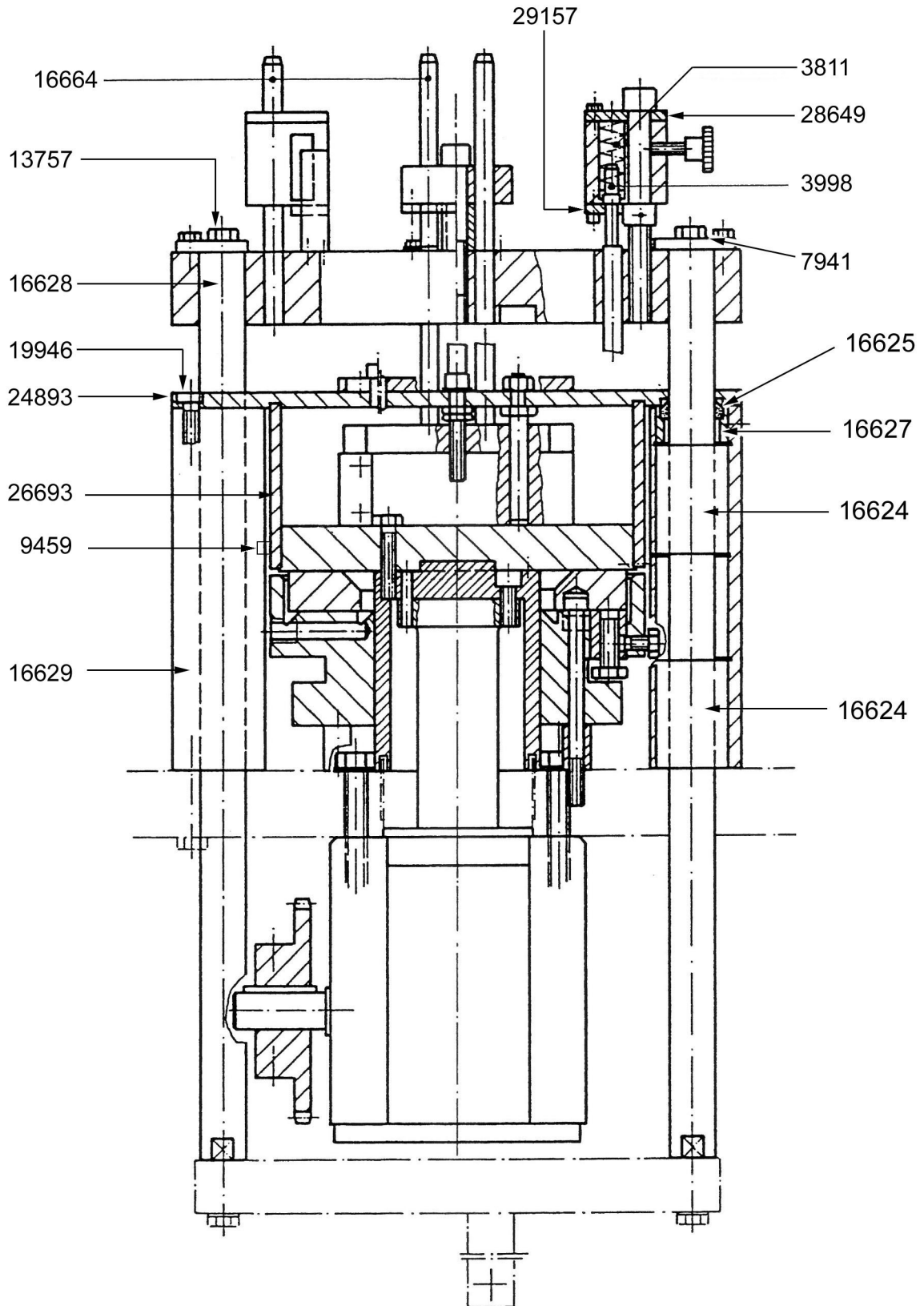
Section 14.2: separation



Section 14.2: Capsule separation

IIM No.	Description
3410	BEARING,LINER,20MM SHAFT
3480	SEAL,20MM SHAFT
3820	HOSE,91MM LONG
4494	BEARING
7708	SUCTION SHOE,3 COUNT
16663	SHAFT,SEPARATION

Section 15: dosing device



IIM

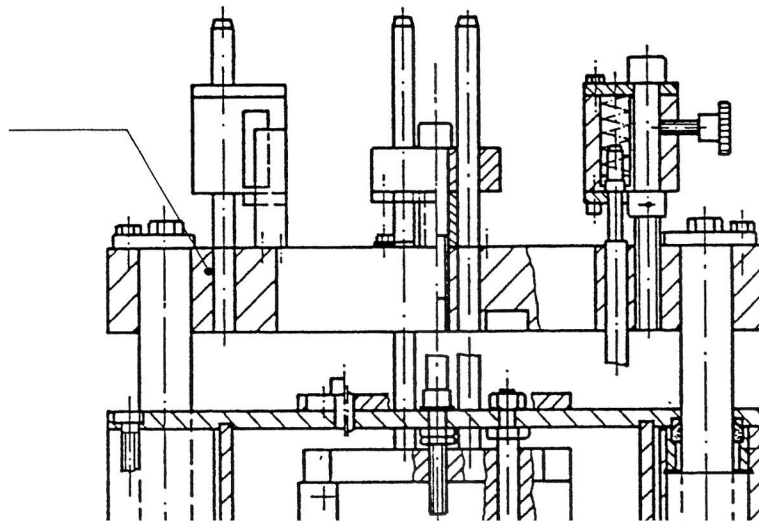
Tel (336) 584-4777

Fax (336) 584-9540

Section 15: Dosing device/powder level sensing

IIM No.	Description
3811	COMPRESSION SPRING
3998	CAP,PLASTIC,TAMPING SPRING
7941	SCREW, GUIDE RING MOUNT, M10
9459	SCREW,DOSING BOWL MOUNT
13757	SCREW, GUIDE RING MOUNT, M8
16624	LINEAR BEARING
16625	SEAL,WIPER,SINGLE LIP
16627	SPACER
16628	SHAFT,TAMPING
16629	COLUMN,TAMPING
16664	SHAFT,GUIDE
19946	SCREW, LEVEL SENSOR PLATE MOUNT
24893	LEVEL SENSOR PLATE,STAINLESS
26693	DOSING BOWL
28649	LOCKING PLATE
29157	TAMPING PIN LOCKING PLATE
29817	PLATE,LEVEL SENSOR,ALUMINUM

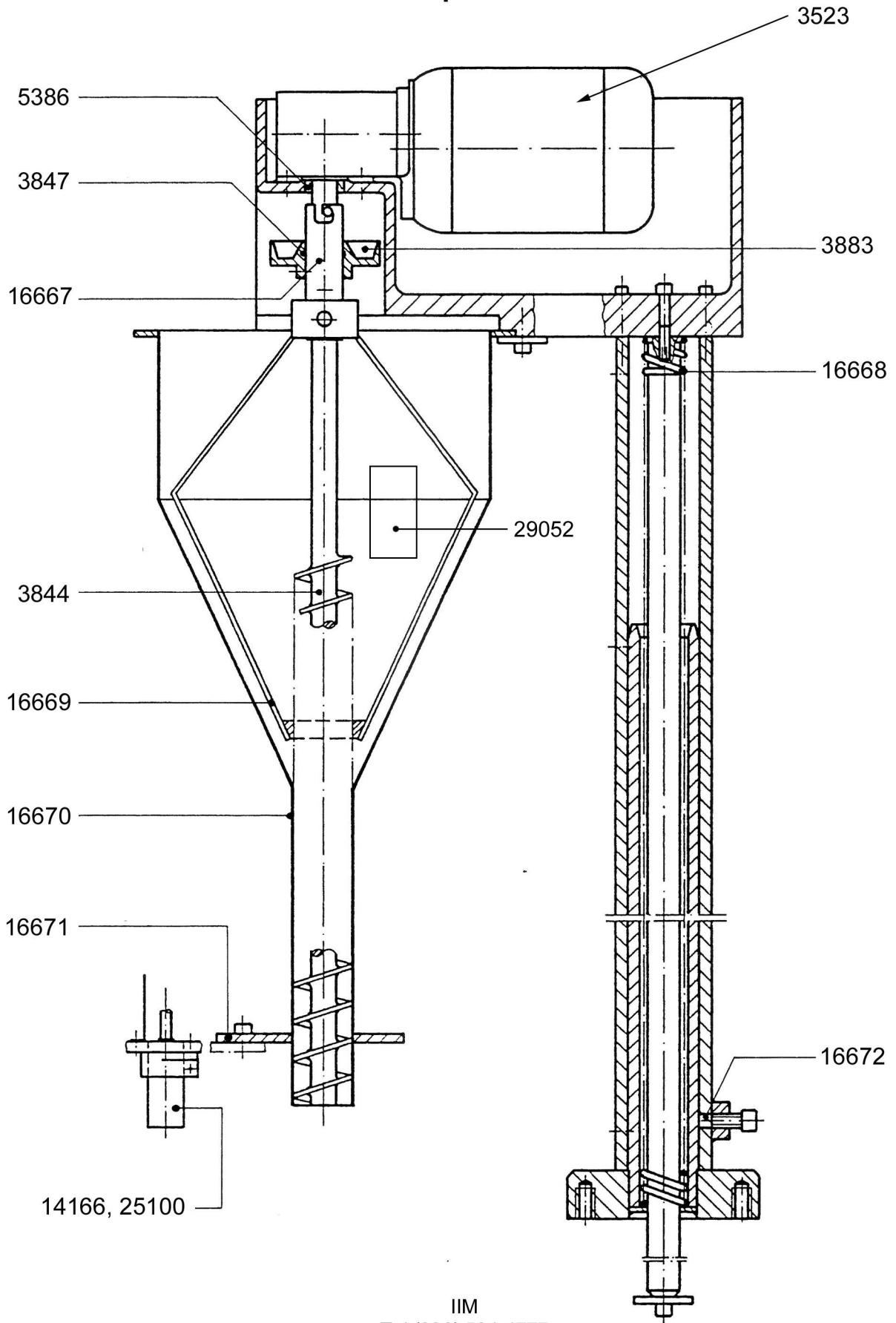
Section 16: tamping head/guide ring



Section 16: Tamping head/guide ring

IIM No.	Description
16666	GUIDE RING,BRONZE
29828	GUIDE RING,BRONZE,BUSHED & SEALED
29829	GUIDE RING,ALUMINUM,BUSHED & SEALED

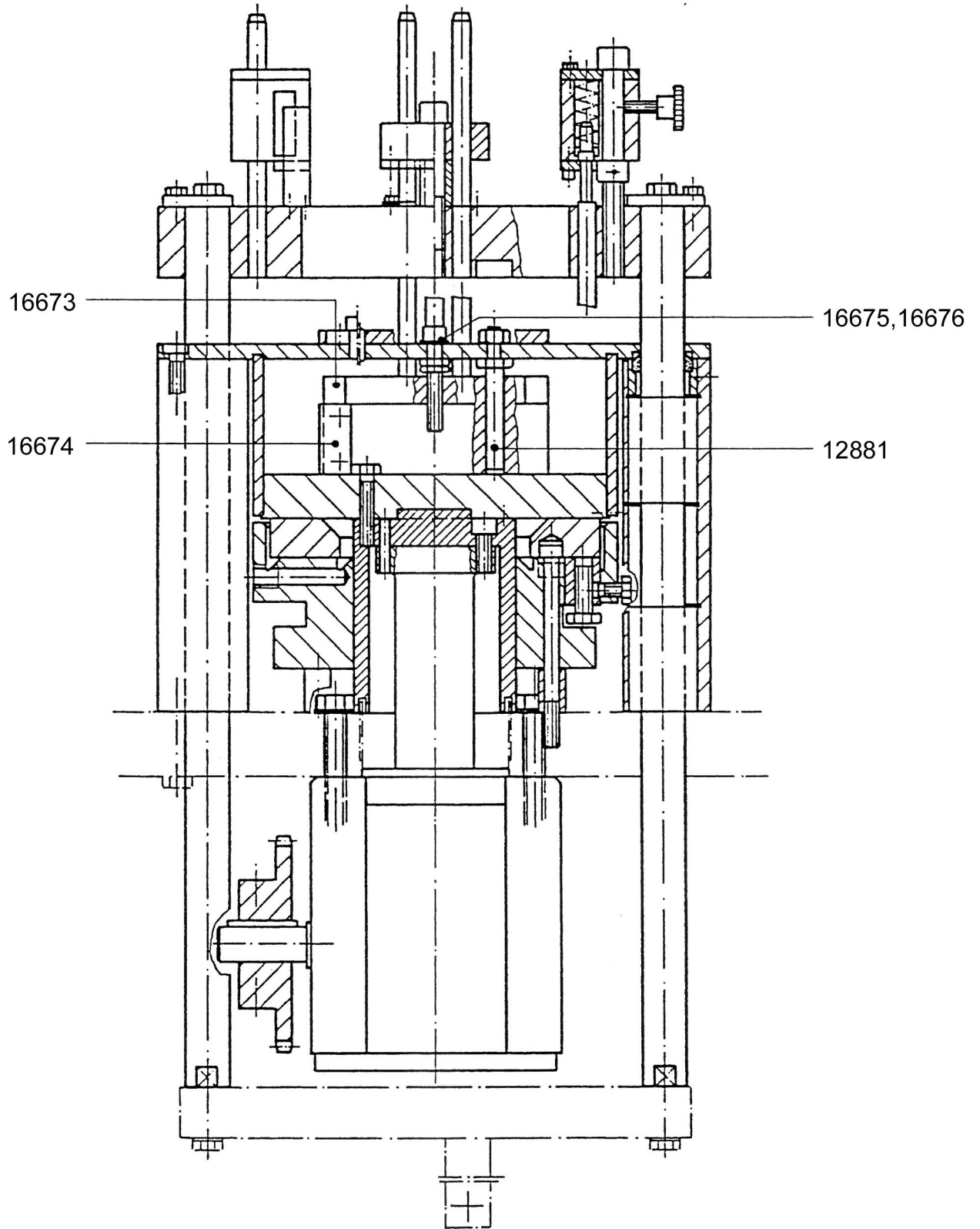
Section 17: powder infeed



Section 17: Powder infeed

IIM No.	Description
3523	MOTOR+GEARBOX,AGITATOR,COMPLETE
3844	AUGER
3847	O-RING
3883	CUP
5386	SEAL RING,AUGER MOTOR GEARBOX
14166	SENSOR,CAPACITIVE
16667	COUPLING
16668	COMPRESSION SPRING
16669	STIRRER
16670	HOPPER
16671	COVER PLATE
16672	BUSHING
25100	SENSOR,CAPACITIVE PROXIMITY
29052	SIGHT GLASS

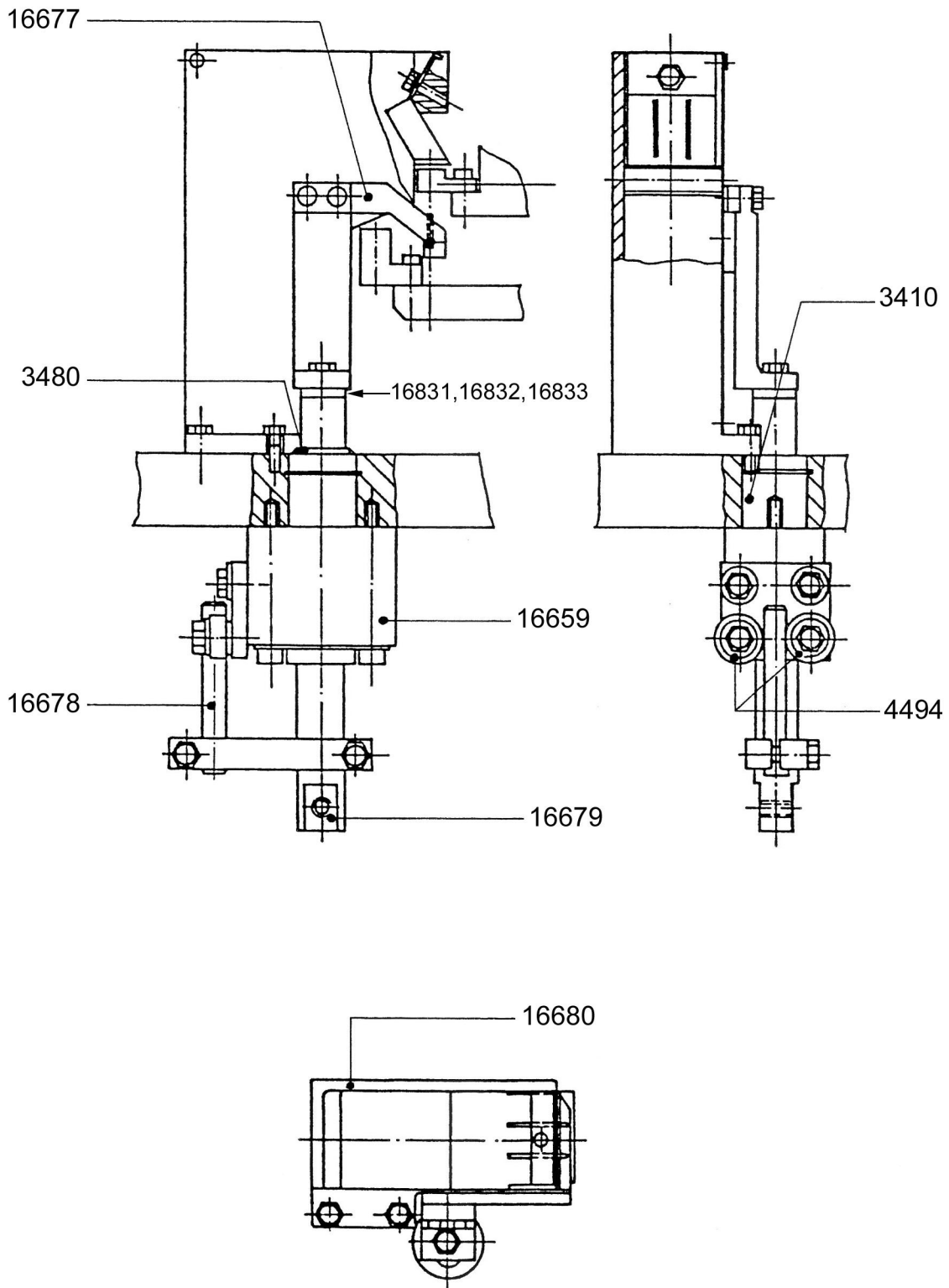
Section 18: powder transfer



Section 18: Powder transfer unit

IIM No.	Description
12881	SHAFT,GUIDE,WIPER BLOCK
16673	WIPER BLOCK,3 CT
16674	KNIFE
16675	SPRING,DISC
16676	NUT

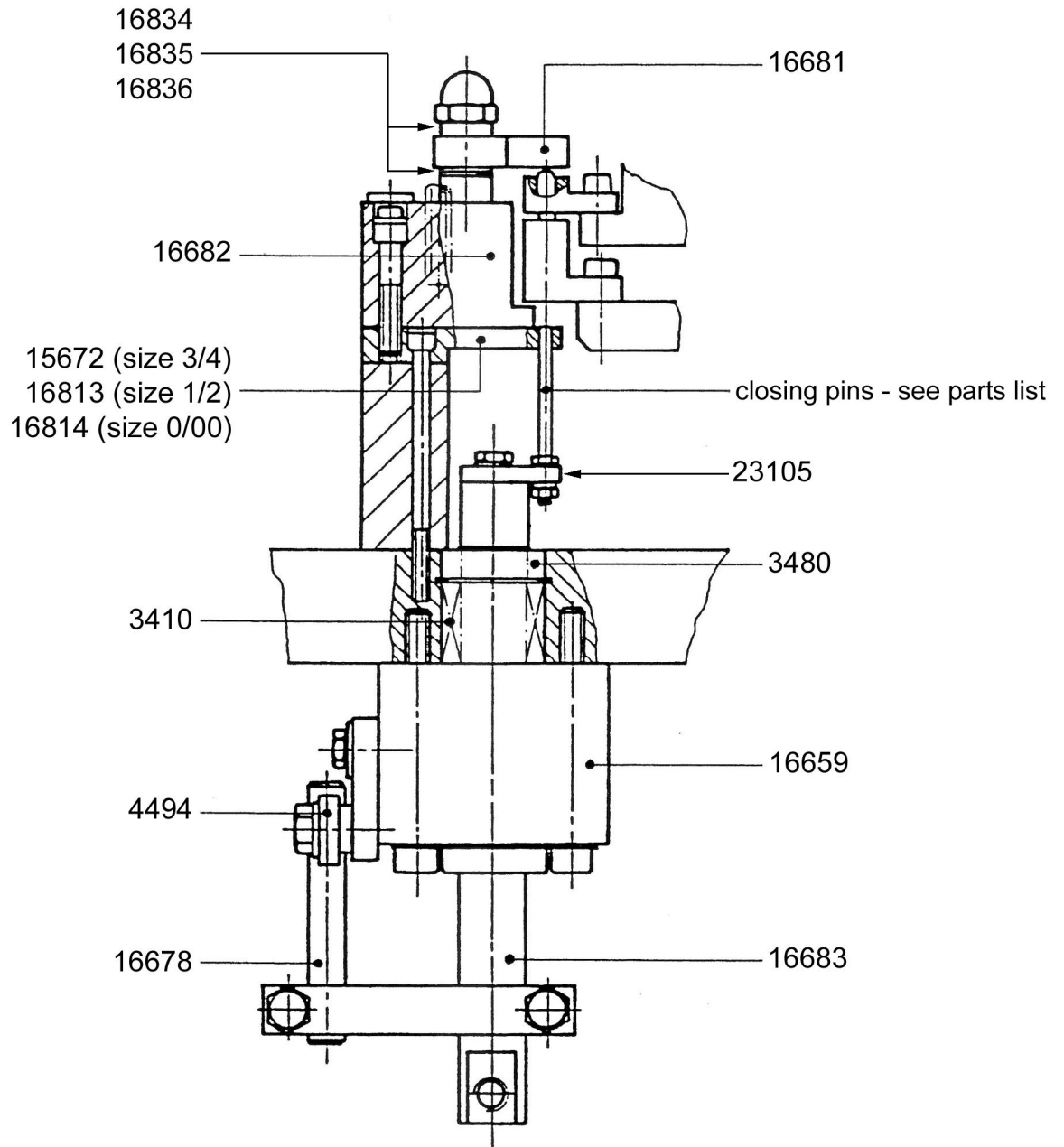
Section 19: faulty capsule ejection



Section 19: Faulty capsule ejection

IIM No.	Description
3410	BEARING,LINER,20MM SHAFT
3480	SEAL,20MM SHAFT
4494	BEARING
16659	GUIDE PIECE
16677	FAULTY CAPSULE EJECTION ARM, COMPLETE
16678	SHAFT,GUIDE
16679	SHAFT,FAULTY CAPSULE
16680	BIN,FAULTY CAPSULE
16831	STOP,UPPER CLOSING
16832	MANIFOLD,VACUUM
16833	SHAFT,UPPER CLOSING

Section 20: closing



IIM

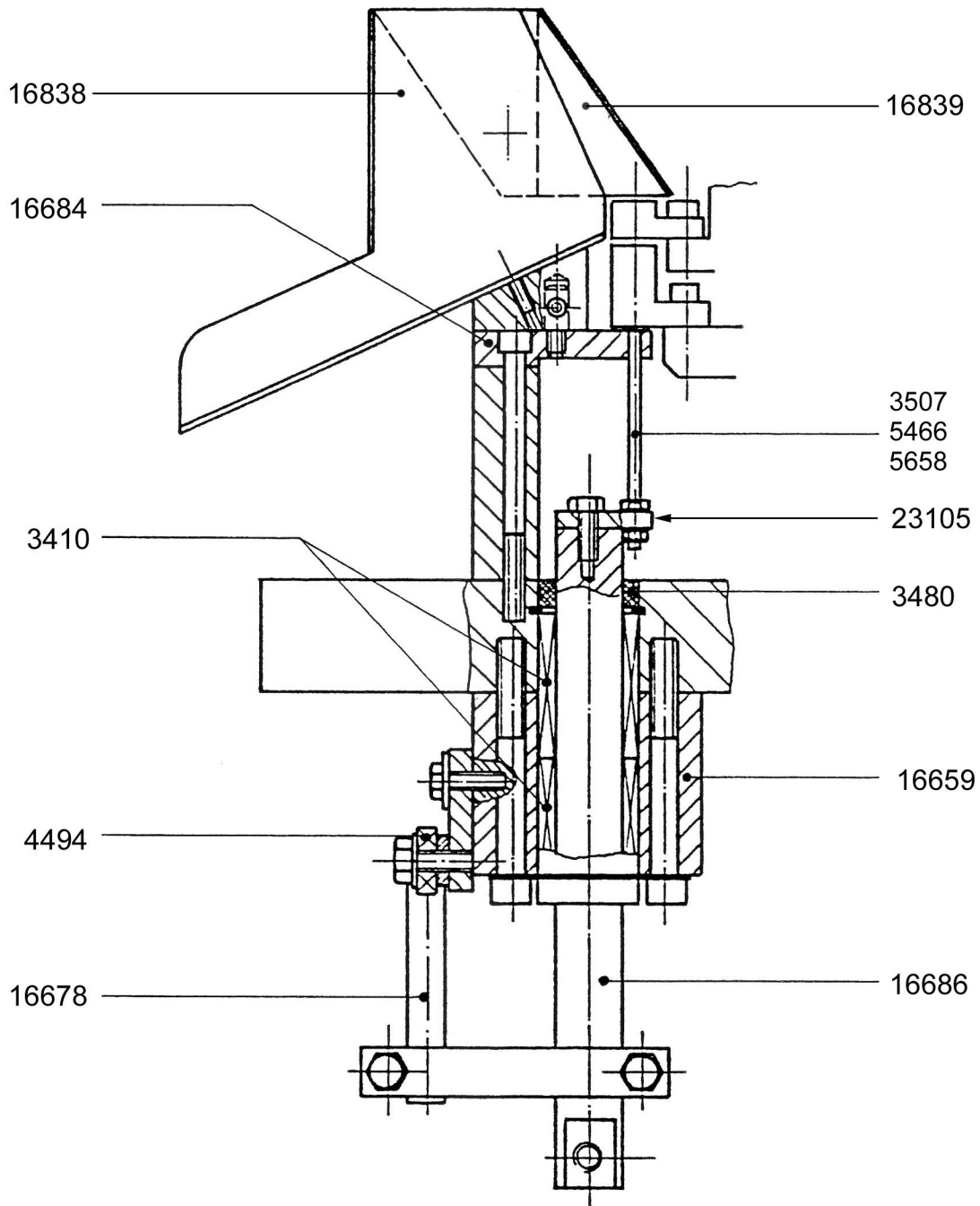
Tel (336) 584-4777

Fax (336) 584-9540

Section 20: Closing

IIM No.	Description
3410	BEARING,LINEAR,20MM SHAFT
3442	HOSE,DOSING RING
3480	SEAL,20MM SHAFT
4494	BEARING
15672	GUIDE PLATE,CLOSING,SIZE 3/4
16659	GUIDE PIECE
16678	SHAFT,GUIDE
16681	STOP,UPPER CLOSING
16682	MANIFOLD,VACUUM
16683	SHAFT,UPPER CLOSING
16813	GUIDE PLATE,CLOSING,SIZE 1/2
16814	GUIDE PLATE,CLOSING,SIZE 0/00
16834	SPACER,UPPER CLOSING,1MM,SIZE 4/2/0/000
16835	SPACER,UPPER CLOSING,4MM,SIZE 1/0/00
16836	SPACER,UPPER CLOSING,2MM,SIZE 3/2/00/000
23105	PLATE,CLOSING/EJECTION,3CT,OLD STYLE
13414	PIN,CLOSING,CONCAVE,SIZE 0/00
7323	PIN,CLOSING,CONCAVE,SIZE 0/00,POWDER SHEDDING
7319	PIN,CLOSING,CONCAVE,SIZE 1/2
7322	PIN,CLOSING,CONCAVE,SIZE 1/2,POWDER SHEDDING
3448	PIN,CLOSING,CONCAVE,SIZE 3/4
7321	PIN,CLOSING,CONCAVE,SIZE 3/4,POWDER SHEDDING

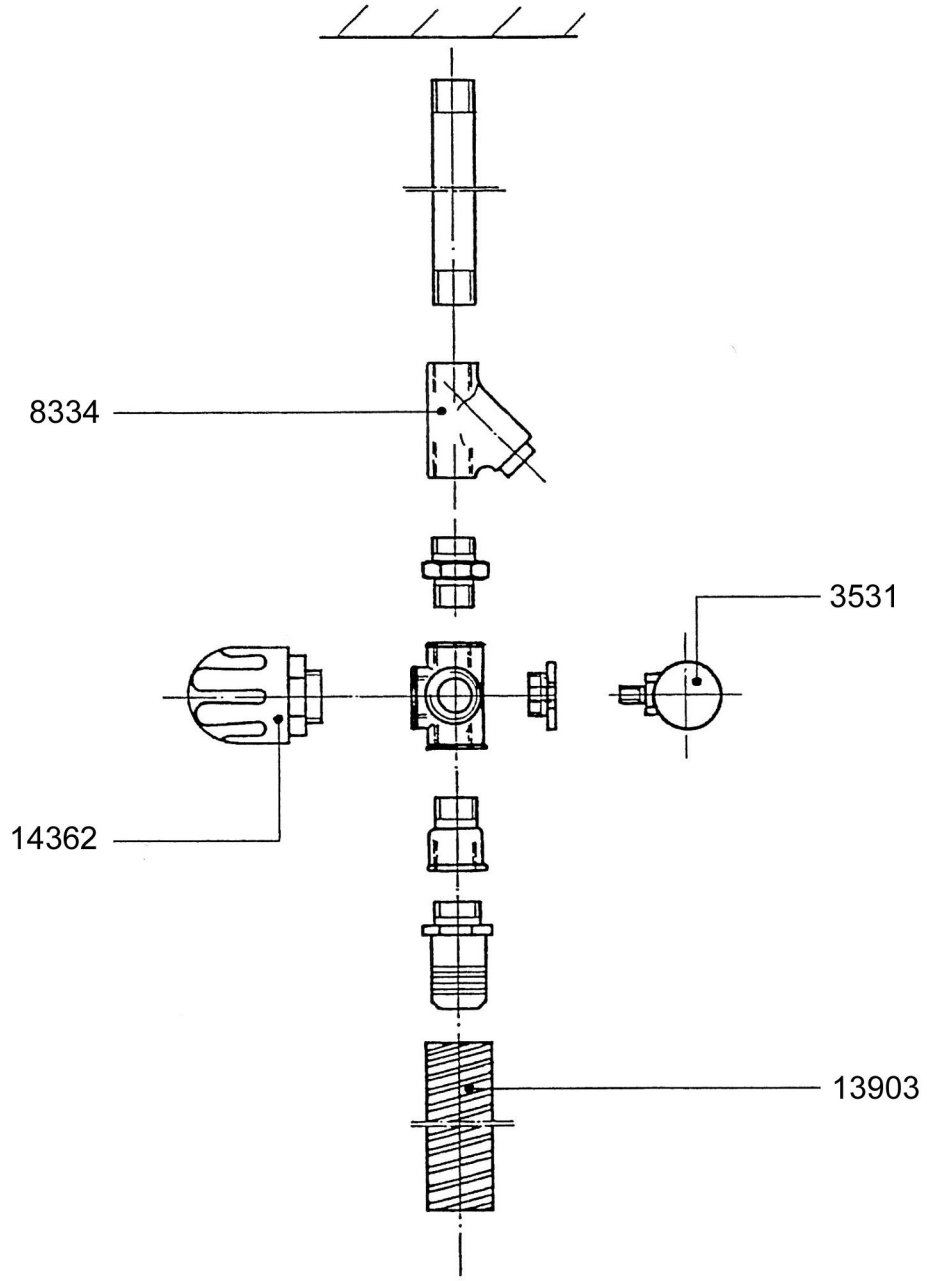
Section 21: ejection



Section 21: Capsule ejection

IIM No.	Description
3410	BEARING,LINER,20MM SHAFT
3480	SEAL,20MM SHAFT
3507	PIN,EJECTION,FLAT,NEW STYLE,62MM LONG
4494	BEARING
5466	PIN,EJECTION,CONCAVE,66MM LONG
5658	PIN,EJECTION,FLAT,OLD STYLE,66MM LONG
16659	GUIDE PIECE
16678	SHAFT,GUIDE
16684	PLATE,GUIDE,EJECTION,3CT
16686	SHAFT,EJECTION
16838	EJECTION CHUTE
16839	COVER WITH AIR BLAST,EJECTION CHUTE
23105	PLATE,CLOSING/EJECTION,3CT,OLD STYLE

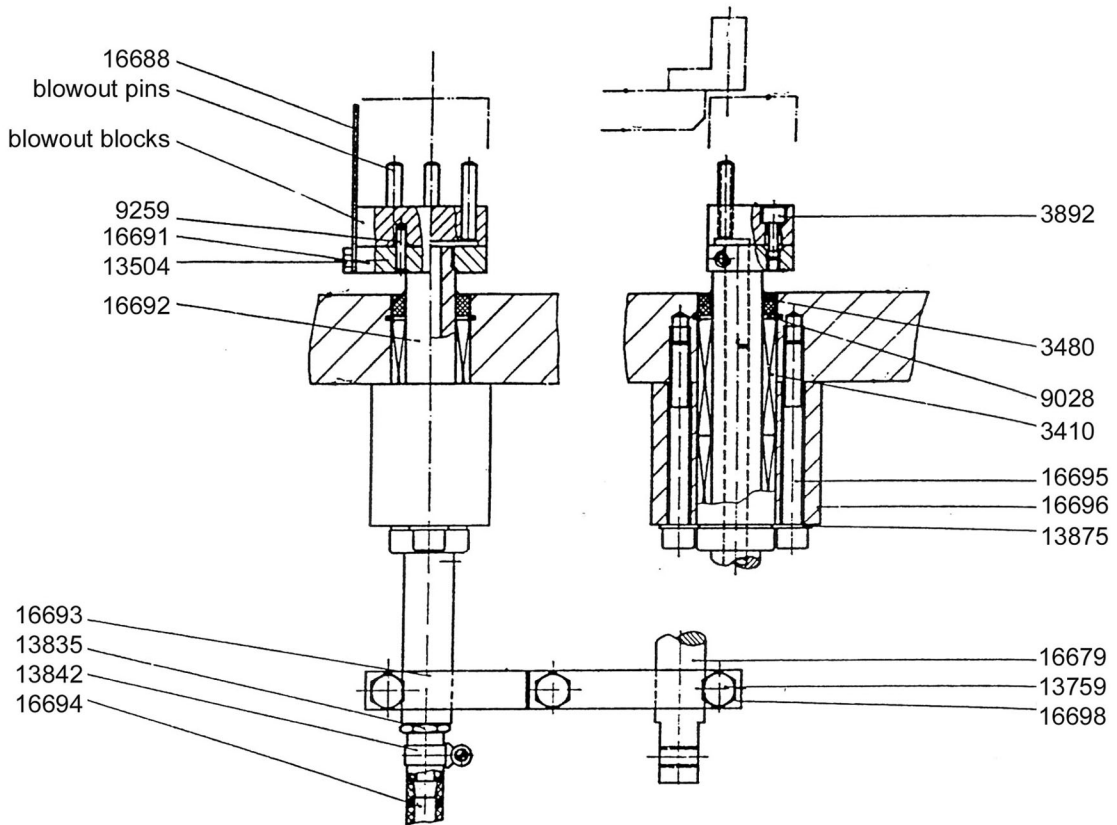
Section 22: vacuum system



Section 22: Vacuum system with filter

IIM No.	Description
3109	FILTER FOR CANISTER 8334
3531	GAUGE,VACUUM
8334	FILTER CANISTER
13903	HOSE,REINFORCED
14362	VACUUM VALVE

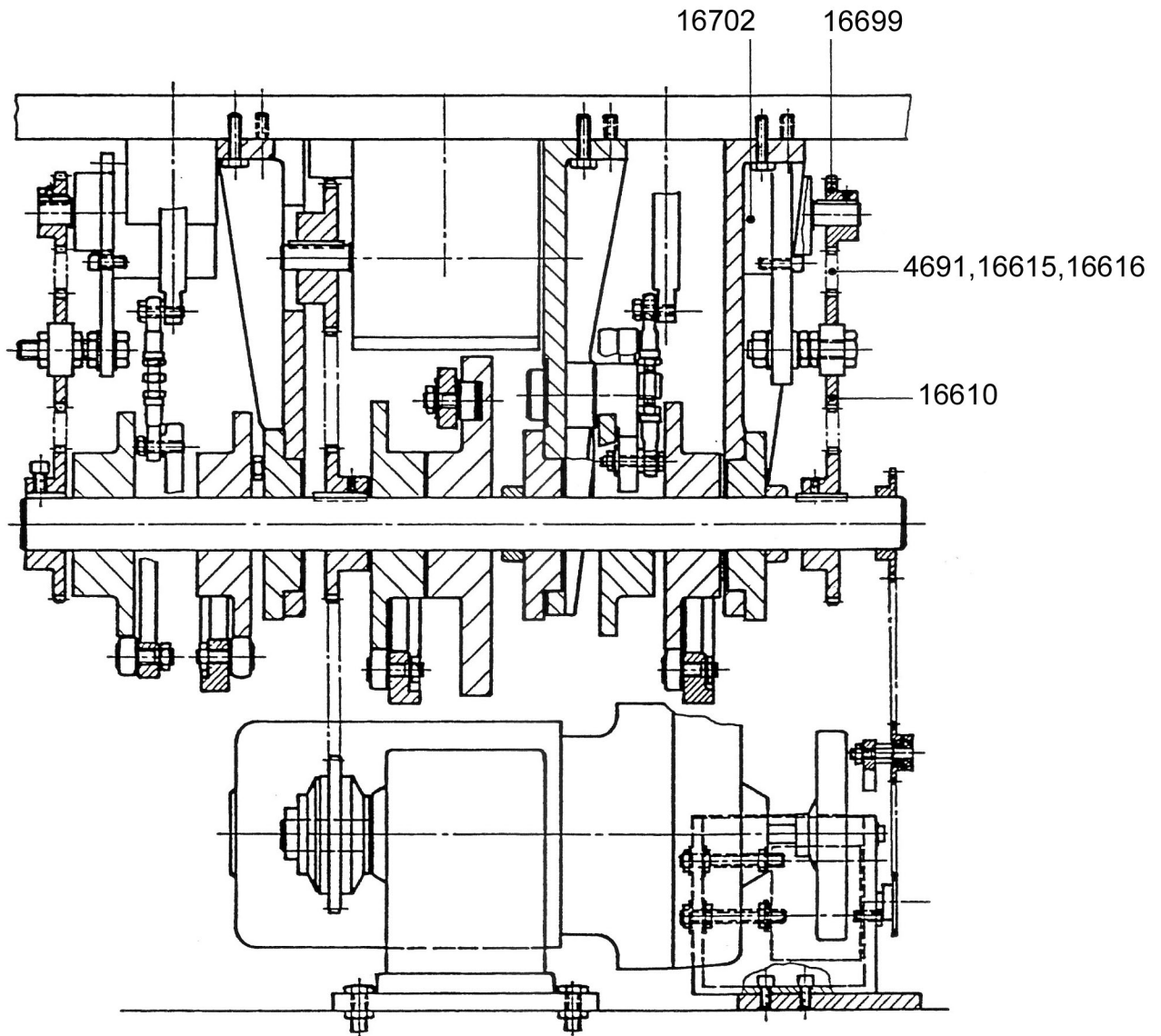
Section 23: blowout and cleaning



Section 23: Blowout and cleaning

IIM No.	Description
3410	BEARING,LINER,20MM SHAFT
3480	SEAL,20MM SHAFT
3892	BOLT,MODIFIED,M6 X 16
9028	RETAINING RING,INTERNAL
9259	PIN,DOWEL
13504	SCREW
13759	SCREW
13835	BARB,HOSE
13842	CLAMP,HOSE
13875	WASHER,M8,SERRATED,STAINLESS
16679	SHAFT
16688	DEFLECTOR,BLOWOUT
16691	SHAFT+PLATE,BLOWOUT
16692	SHAFT
16693	CROSS MEMBER
16694	HOSE
16695	SCREW
16696	HOUSING
16698	CROSS MEMBER
16690	BLOCK,BLOWOUT,SIZE 0/00,3 CT
16689	BLOCK,BLOWOUT,SIZE 1/2,3 CT
16687	BLOCK,BLOWOUT,SIZE 3/4,3 CT
4990	NOZZLE,BLOWOUT,SIZE 0/00
4988	NOZZLE,BLOWOUT,SIZE 1/2
4989	NOZZLE,BLOWOUT,SIZE 3/4
27323	BLOCK,BLOWOUT,SIZE 0/00,3 CT,W/BRUSHES
27324	BLOCK,BLOWOUT,SIZE 1/2,3 CT,W/BRUSHES
27325	BLOCK,BLOWOUT,SIZE 3/4,3 CT,W/BRUSHES
24947	REPLACEMENT BRUSH SIZE 0/00
24266	REPLACEMENT BRUSH SIZE 1/2
24403	REPLACEMENT BRUSH SIZE 3/4
24641	REPLACEMENT NOZZLE FOR ALL BRUSH SIZES

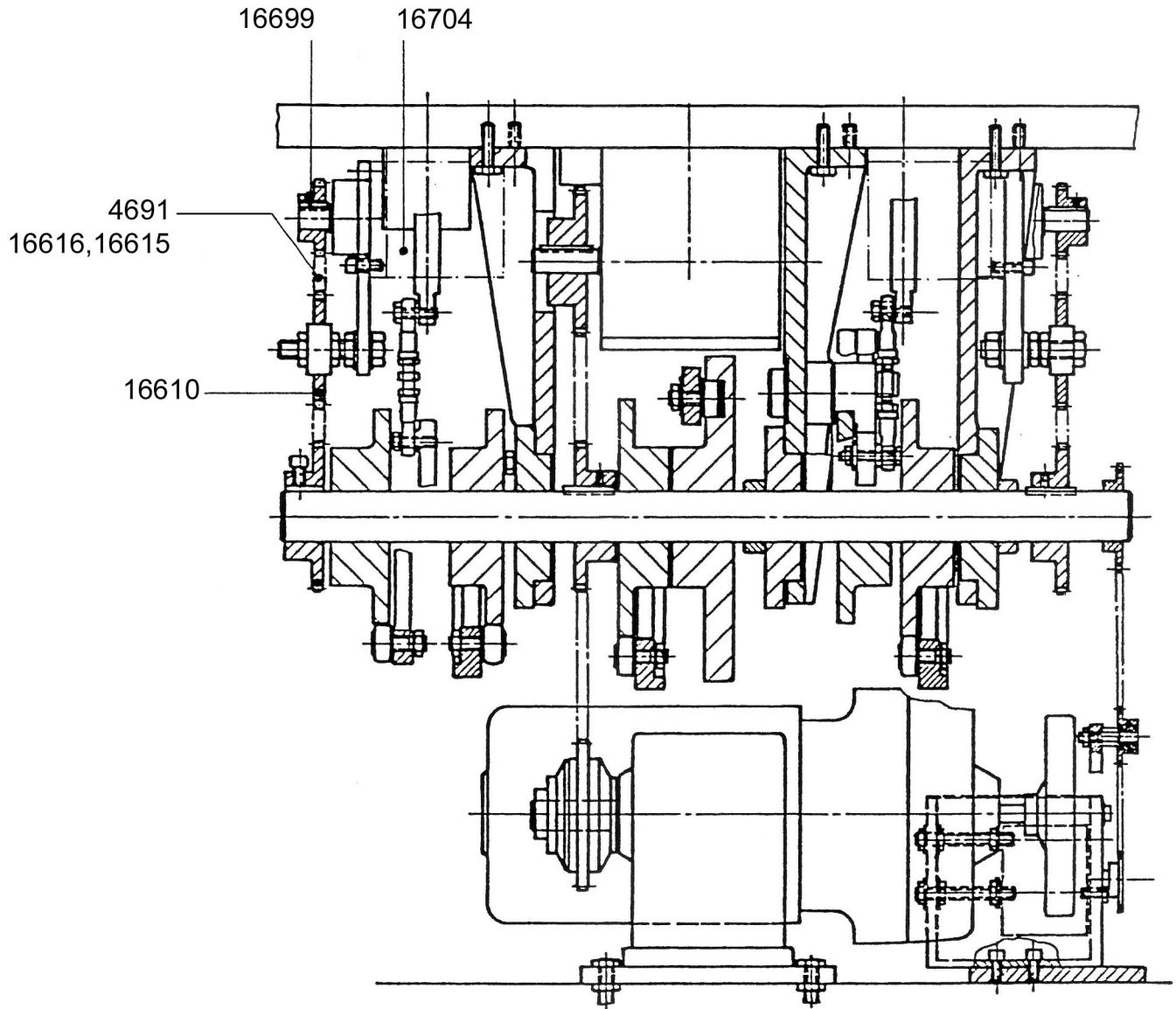
Section 24: additional drive parts before powder



Section 24: Drive, additional equipment, before powder station

IIM No.	Description
4691	CHAIN
16610	CHAIN TENSIONER
16615	MASTER LINK
16616	LINK
16699	SPROCKET,Z=11
16702	BEVEL GEARING

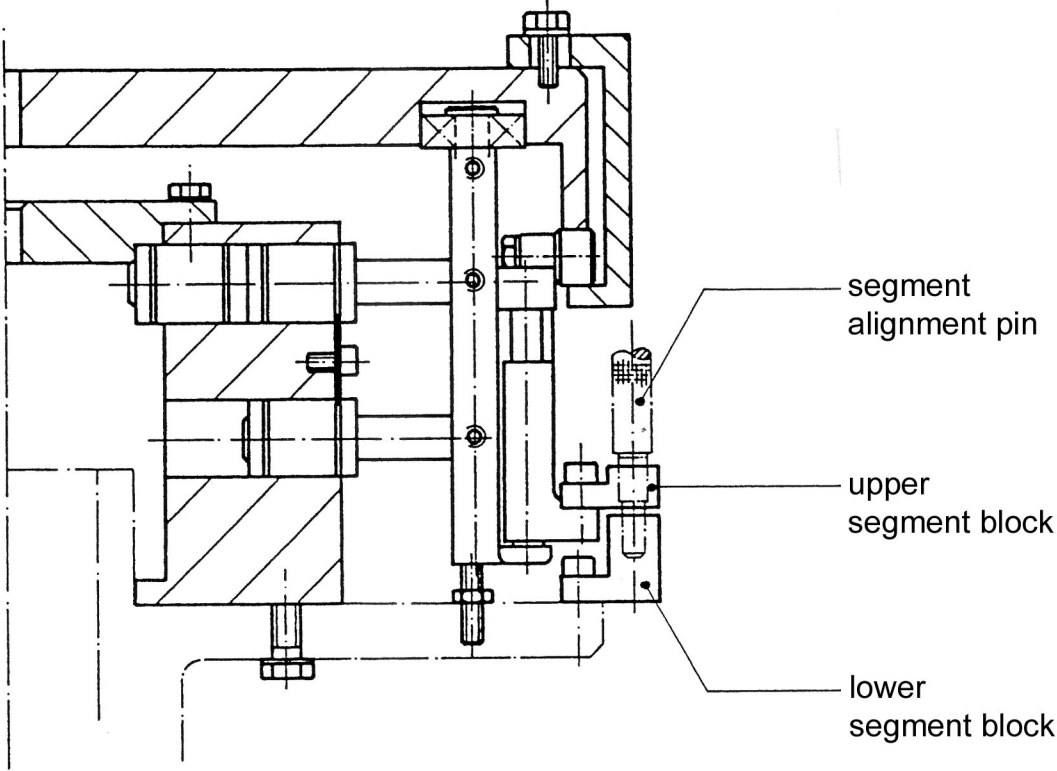
Section 25: additional drive parts after powder



Section 25: Drive, additional equipment, after powder station

IIM No.	Description
4691	CHAIN
16610	CHAIN TENSIONER
16615	MASTER LINK
16616	LINK
16699	SPROCKET,Z=11
16704	PNEUMATIC PISTON

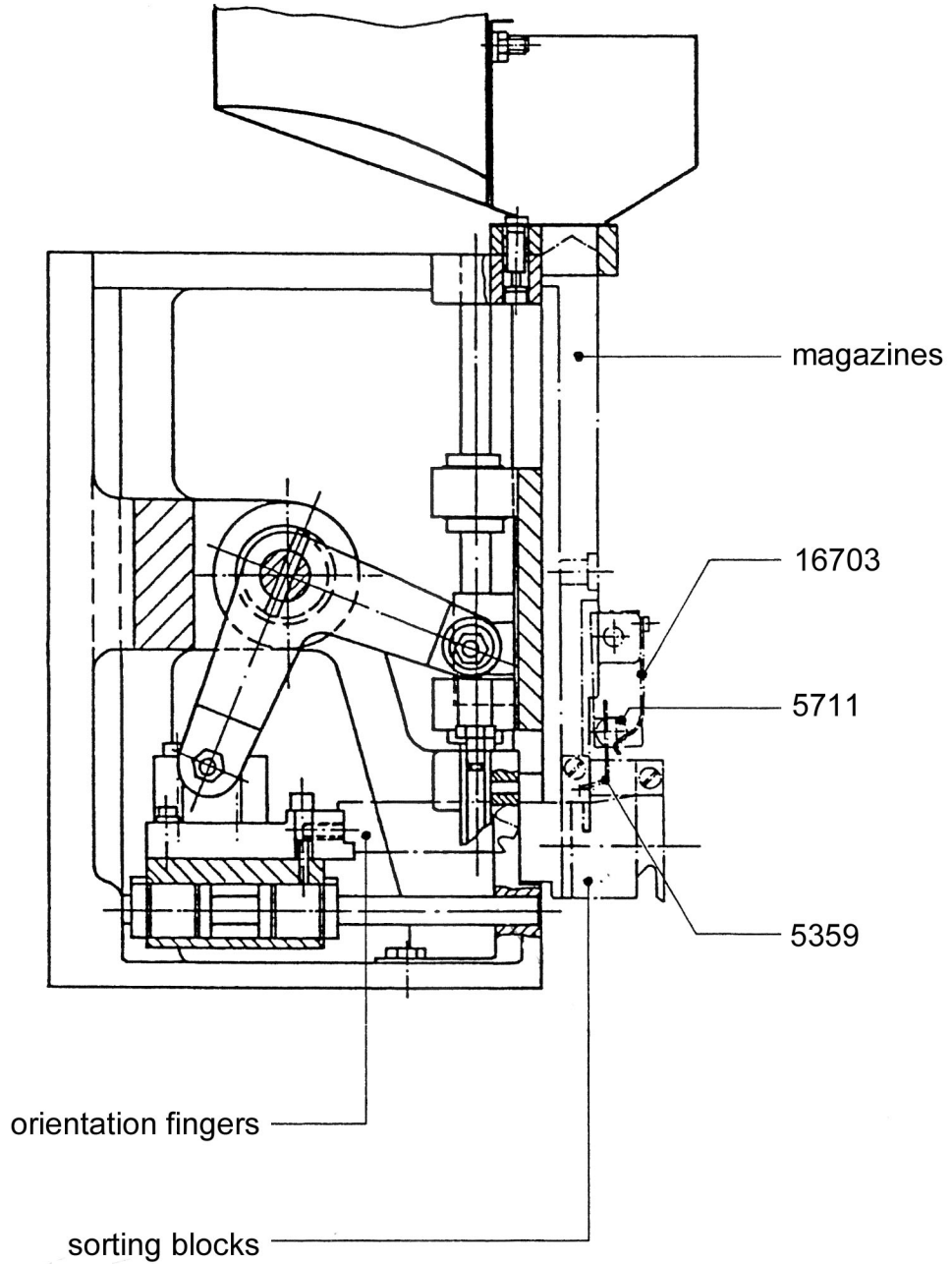
Section 26.1: segment blocks



Section 26.1: segment blocks

IIM No.	Description
16745	BLOCK,SEGMENT,LOWER,SIZE 000
16746	BLOCK,SEGMENT,LOWER,SIZE 00
16747	BLOCK,SEGMENT,LOWER,SIZE 0EL
16749	BLOCK,SEGMENT,LOWER,SIZE 0
16750	BLOCK,SEGMENT,LOWER,SIZE 1
16751	BLOCK,SEGMENT,LOWER,SIZE 2
16752	BLOCK,SEGMENT,LOWER,SIZE 3
16753	BLOCK,SEGMENT,LOWER,SIZE 4
16754	BLOCK,SEGMENT,LOWER,SIZE 5
16736	BLOCK,SEGMENT,UPPER,SIZE 000
16737	BLOCK,SEGMENT,UPPER,SIZE 00
16738	BLOCK,SEGMENT,UPPER,SIZE 0EL
16739	BLOCK,SEGMENT,UPPER,SIZE 0
16740	BLOCK,SEGMENT,UPPER,SIZE 1
16741	BLOCK,SEGMENT,UPPER,SIZE 2
16742	BLOCK,SEGMENT,UPPER,SIZE 3
16743	BLOCK,SEGMENT,UPPER,SIZE 4
16744	BLOCK,SEGMENT,UPPER,SIZE 5
13360	PIN,SEGMENT ALIGNMENT,SIZE 000
4923	PIN,SEGMENT ALIGNMENT,SIZE 00
8185	PIN,SEGMENT ALIGNMENT,SIZE 0EL
8185	PIN,SEGMENT ALIGNMENT,SIZE 0
4924	PIN,SEGMENT ALIGNMENT,SIZE 1
5190	PIN,SEGMENT ALIGNMENT,SIZE 2
5191	PIN,SEGMENT ALIGNMENT,SIZE 3
13361	PIN,SEGMENT ALIGNMENT,SIZE 4
13362	PIN,SEGMENT ALIGNMENT,SIZE 5

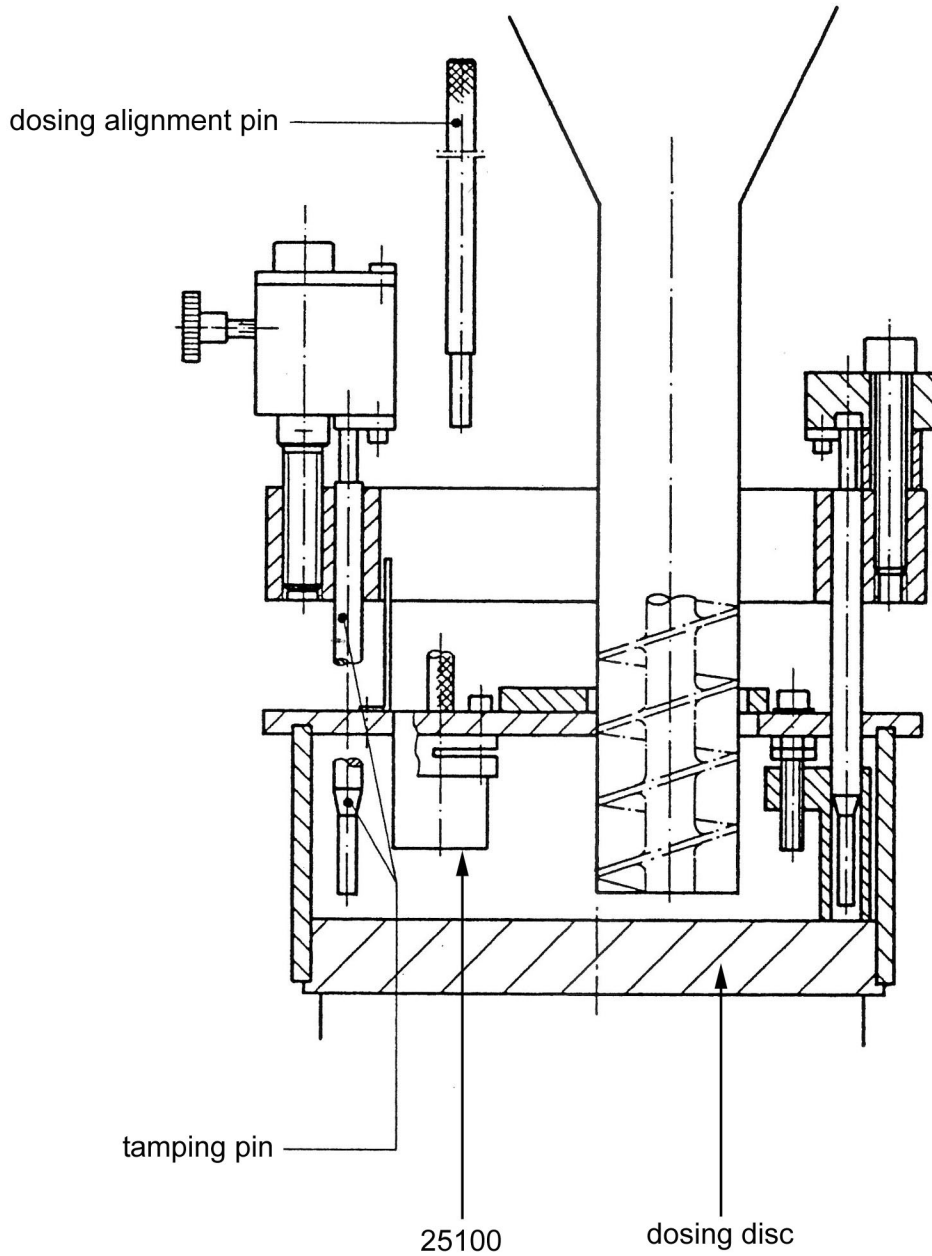
Section 26.2: sorting size parts



Section 26.2: Sorting size parts

IIM No.	Description
5359	FINGER,LEAF SPRING
5711	BEARING,MAGAZINE ARM
16703	SPRING,LEAF
16727	BLOCK,SORTING,SIZE 000
16728	BLOCK,SORTING,SIZE 00
16729	BLOCK,SORTING,SIZE 0EL
16730	BLOCK,SORTING,SIZE 0
16731	BLOCK,SORTING,SIZE 1
16732	BLOCK,SORTING,SIZE 2
16733	BLOCK,SORTING,SIZE 3
16734	BLOCK,SORTING,SIZE 4
16735	BLOCK,SORTING,SIZE 5
16718	FINGERS,ORIENTATION,SIZE 000
16719	FINGERS,ORIENTATION,SIZE 00
16720	FINGERS,ORIENTATION,SIZE 0EL
16721	FINGERS,ORIENTATION,SIZE 0
16722	FINGERS,ORIENTATION,SIZE 1
16723	FINGERS,ORIENTATION,SIZE 2
16724	FINGERS,ORIENTATION,SIZE 3
16725	FINGERS,ORIENTATION,SIZE 4
16726	FINGERS,ORIENTATION,SIZE 5
16709	MAGAZINE,SIZE 000
16710	MAGAZINE,SIZE 00
16711	MAGAZINE,SIZE 0EL
16712	MAGAZINE,SIZE 0
16713	MAGAZINE,SIZE 1
16714	MAGAZINE,SIZE 2
16715	MAGAZINE,SIZE 3
16716	MAGAZINE,SIZE 4
16717	MAGAZINE,SIZE 5

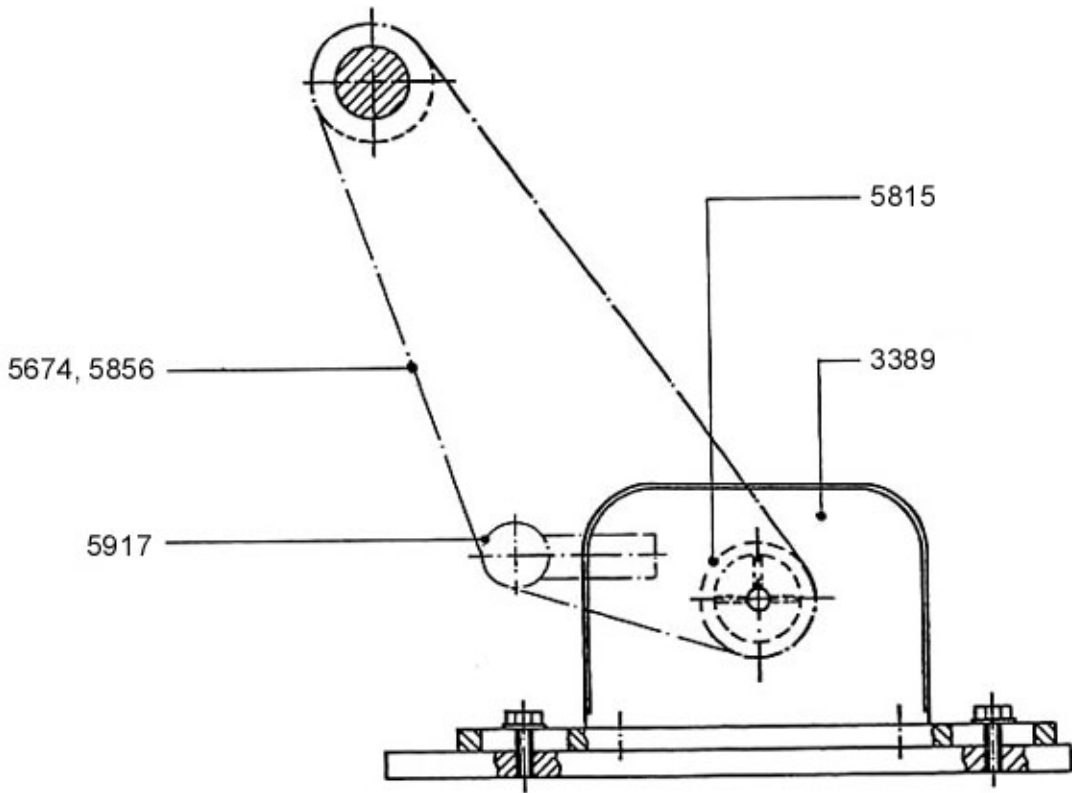
Section 26.3: powder sensing



Section 26.3: Size parts: tamping pins

IIM No.	Description
13402	POWDER SENSING SYSTEM,COMPLETE
25100	SENSOR,CAPACITIVE PROXIMITY
13165	PIN,TAMPING,SIZE 000
3879	PIN,TAMPING,SIZE 00
3839	PIN,TAMPING,SIZE 0EL
3839	PIN,TAMPING,SIZE 0
3840	PIN,TAMPING,SIZE 1
3878	PIN,TAMPING,SIZE 2
5150	PIN,TAMPING,SIZE 3
5126	PIN,TAMPING,SIZE 4
11312	PIN,TAMPING,SIZE 5
7289	PIN,DOSING ALIGNMENT,SIZE 000
3539	PIN,DOSING ALIGNMENT,SIZE 00
7291	PIN,DOSING ALIGNMENT,SIZE 0EL
7291	PIN,DOSING ALIGNMENT,SIZE 0
4925	PIN,DOSING ALIGNMENT,SIZE 1
5188	PIN,DOSING ALIGNMENT,SIZE 2
5189	PIN,DOSING ALIGNMENT,SIZE 3
7293	PIN,DOSING ALIGNMENT,SIZE 4
7294	PIN,DOSING ALIGNMENT,SIZE 5
16794	SIZE CHANGE KIT,SIZE 000
16790	SIZE CHANGE KIT,SIZE 00
16795	SIZE CHANGE KIT,SIZE 0EL
16796	SIZE CHANGE KIT,SIZE 0
23617	SIZE CHANGE KIT,SIZE 1
16798	SIZE CHANGE KIT,SIZE 2
16799	SIZE CHANGE KIT,SIZE 3
16800	SIZE CHANGE KIT,SIZE 4
16801	SIZE CHANGE KIT,SIZE 5

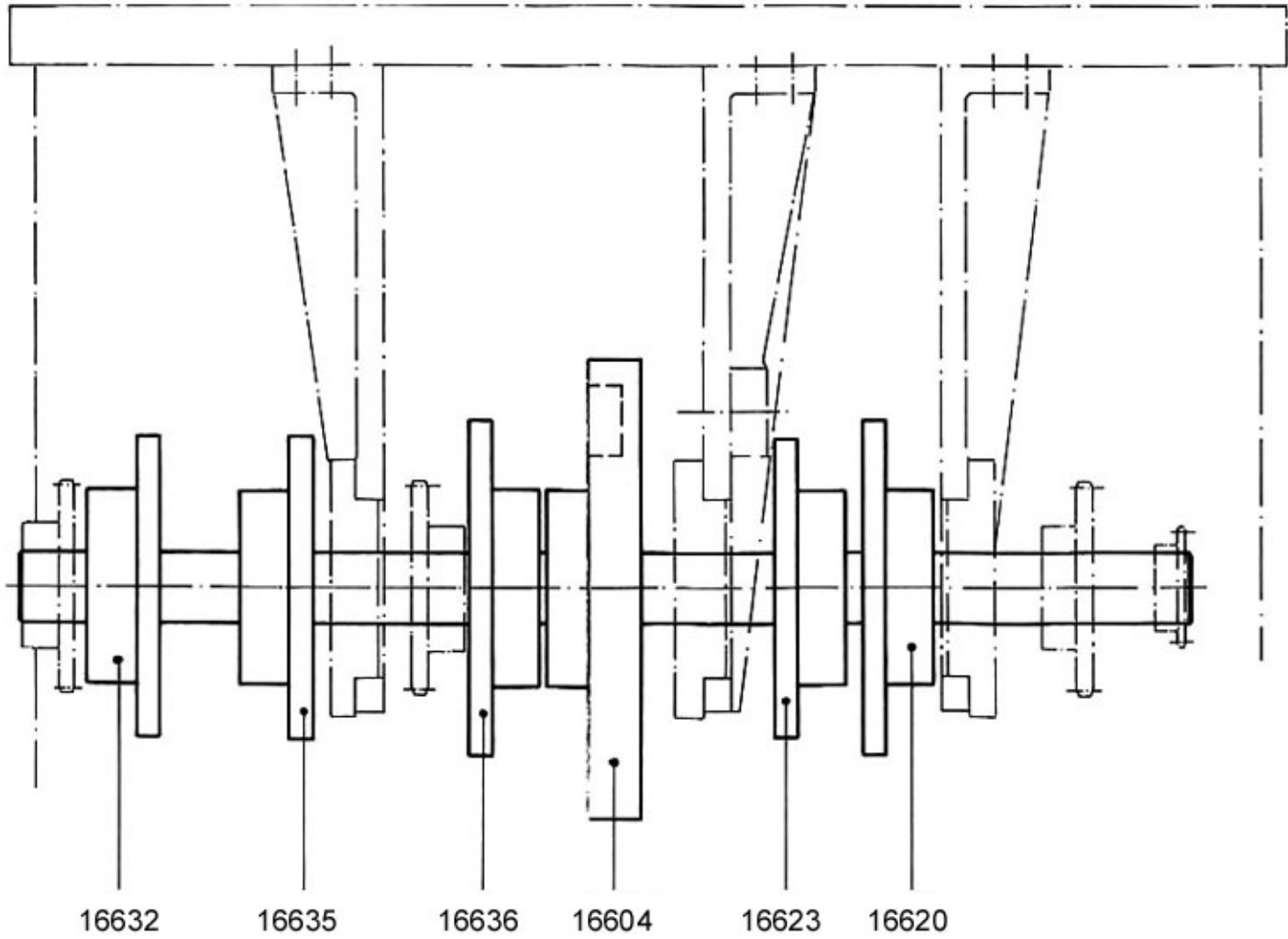
Section 27: cam box



Section 27: Cam box

IIM No.	Description
3389	PROGRAMMABLE INDEXING UNIT (CAM BOX)
5674	CHAIN
5815	SPROCKET
5856	MASTER LINK
5917	SPROCKET, IDLER

Section 28: cam plan



Section 28: Cam plan

IIM No.	Description
16604	CAM,TAMPING
16620	CAM,SORTING
16623	CAM,SEPARATION
16632	CAM,FAULTY CAPSULE
16635	CAM,CLOSING
16636	CAM,EJECTION

Index of Parts - GKF 400

IIM No.	Section
2693	5.2
2863	10
3088	26.3
3109	22
3173	13
3389	27
3400	10
3410	14.2, 19, 20, 21, 23
3436	10, 13
3441	3, 4, 6, 7, 8
3442	11, 20
3446	13
3448	20
3456	13
3480	14.2, 19, 20, 21, 23
3482	14.1
3507	21
3523	17
3531	22
3539	26.3
3811	15
3820	14.2
3834	14.1
3839	26.3
3840	26.3
3844	17
3847	17
3878	26.3
3879	26.3
3883	17
3892	23
3998	15
4494	13, 14.2, 19, 20, 21
4691	2, 24, 25
4923	26.1
4924	26.1
4925	26.3
4988	23
4989	23
4990	23
5034	3, 4, 5, 2, 6, 7, 8
5126	26.3
5150	26.3
5188	26.3
5189	26.3
5190	26.1
5191	26.1
5341	10
5359	26.2
5386	17
5466	21

Index of Parts - GKF 400

IIM No.	Section
5658	14.1, 21
5674	27
5711	26.2
5815	27
5831	4
5856	27
5917	27
7289	26.3
7291	26.3
7293	26.3
7294	26.3
7319	20
7321	20
7322	20
7323	20
7708	14.1
7708	14.2
7941	15
8185	26.1
8334	22
8535	10
9028	23
9259	23
9528	14.1
9943	10
9945	3,4,6,7,8
9946	3,4,6,7,8
11312	26.3
12101	13
12203	10
12549	14.1
12881	18
12888	4
13165	26.3
13360	26.1
13361	26.1
13362	26.1
13402	26.3
13414	20
13504	23
13757	15
13759	23
13790	22
13810	2
13835	23
13842	23
13875	23
13876	2
14091	2
14166	17
14362	22

Index of Parts - GKF 400

IIM No.	Section
14477	2
15672	20
15815	26.3
16603	5.2
16604	5.2, 28
16605	5.2
16606	5.2
16607	1
16608	1
16609	2
16610	2, 24
16610	25
16611	2
16612	2
16613	2
16614	2
16615	2, 24, 25
16616	2, 24, 25
16617	3
16619	3
16620	3, 28
16621	4
16622	4
16623	4, 28
16624	5.1, 15
16625	5.1, 15
16626	5.1
16627	5.1, 15
16628	5.1, 15
16629	5.1, 15
16630	6
16631	6
16632	6, 28
16633	7
16634	7
16635	7, 28
16636	8, 28
16637	8
16638	8
16639	9
16640	9, 11
16641	10
16642	10
16643	10
16644	10
16645	10
16646	10
16647	10
16648	11
16649	11
16650	11

Index of Parts - GKF 400

IIM No.	Section
16651	11
16652	12
16653	12
16654	13
16655	13
16656	13
16657	13
16658	14.1
16659	14.1, 19, 20, 21
16660	14.1
16663	14.2
16664	15
16666	16
16667	17
16668	17
16669	17
16670	17
16671	17
16672	17
16673	18
16674	18
16675	18
16676	18
16677	19
16678	19, 20, 21
16679	19, 23
16680	19
16681	20
16682	20
16683	20
16684	21
16686	21
16687	23
16688	23
16689	23
16690	23
16691	23
16692	23
16693	23
16694	23
16695	23
16696	23
16698	23
16699	24, 25
16702	24
16703	26.2
16704	25
16709	26.2
16710	26.2
16711	26.2
16712	26.2

Index of Parts - GKF 400

IIM No.	Section
16713	26.2
16714	26.2
16715	26.2
16716	26.2
16717	26.2
16718	26.2
16719	26.2
16720	26.2
16721	26.2
16722	26.2
16723	26.2
16724	26.2
16725	26.2
16726	26.2
16727	26.2
16728	26.2
16729	26.2
16730	26.2
16731	26.2
16732	26.2
16733	26.2
16734	26.2
16735	26.2
16736	26.1
16737	26.1
16738	26.1
16739	26.1
16740	26.1
16741	26.1
16742	26.1
16743	26.1
16744	26.1
16745	26.1
16746	26.1
16747	26.1
16749	26.1
16750	26.1
16751	26.1
16752	26.1
16753	26.1
16754	26.1
16790	26.3
16794	26.3
16795	26.3
16796	26.3
16798	26.3
16799	26.3
16800	26.3
16801	26.3
16813	20
16814	20

Index of Parts - GKF 400

IIM No.	Section
16831	19
16832	19
16833	19
16834	20
16835	20
16836	20
16838	21
16839	21
19946	15
23105	20, 21
23617	26.3
24266	23
24403	23
24641	23
24656	1
24667	14.1
24893	15
24947	23
25100	17
26693	15
26865	11
26866	1
26869	1
26870	1
27323	23
27324	23
27325	23
27378	6
27379	7
27380	8
27381	3
28103	10
28518	10
28649	15
28967	10
29052	17
29102	12
29137	9
29138	9
29157	15