

Welcome to the
SMART LAB

Reliable. Accurate. Results.



ACE Axcel™ Clinical Chemistry System

ALFA WASSERMANN

Diagnostic Technologies, LLC

Intelligence for the Physician Office Lab

From the market leader in POL chemistry testing

ACE Axcel from Alfa Wassermann is a next-generation clinical chemistry system that sets the standard for excellence in today's Physician Office Laboratory (POL). With touch screen functionality, an intuitive user interface, and Internet connectivity, the ACE Axcel offers the latest advances to make in-office laboratory testing fast, convenient, and cost-effective.

Designed to meet the needs of the POL, it has been cleared by the US Food and Drug Administration specifically for use in Physician Office Labs.

ACE Axcel. It's one of the smartest additions to your lab.

The ACE Axcel's comprehensive menu of routine and specialized assays provides an effective tool in the diagnosis and management of diabetes, heart disease, metabolic syndrome, and anemia, as well as other diseases.



Reliable in-office laboratory testing with the ACE Axcel allows the physician to diagnose, monitor, and treat patients faster.



Provide your patients with accurate, timely results. With the ACE Axcel, you get quality results covering a range of the most widely tested conditions, plus convenience for your patients.

Better for Patients

- Fast – Process up to 285 tests per hour with both photometric and potentiometric detection technologies.
- Reliable Results – Avoid sample loss or deterioration caused by transportation to an off-site lab.
- Convenient – Patients don't have to travel to off-site labs for testing. On-site testing facilitates patient compliance, reduces callbacks, and aids prescription management.

Better for Business

- Keep laboratory revenues in-house.
- Perform single or panel tests from extensive test menu. Open reagent system enables custom assays.
- Increase regulatory compliance with easy-to-operate system.
- Seamlessly connect with Electronic Health Records via Lab Information Systems (LIS).

Better for Lab Personnel

- Intuitive software and comprehensive user training.
- Maximum instrument uptime with Alfa Assist™, offering web-enabled technical support 24/7.
- Increased confidence in test results. Join one of the largest peer groups in POLs, making it easy to compare QC results with other Alfa Wassermann users.
- Award-winning service – Alfa Wassermann, a proven provider of excellent customer satisfaction.

Check Reagent Status

View On-board Assays

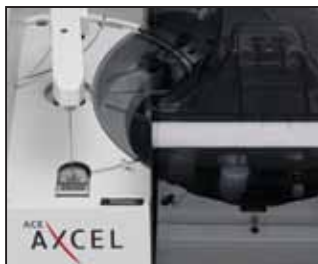


Monitor Reagent Volume



Touch Screen Technology

The touch screen monitor allows users to quickly and easily navigate the ACE Axcel. Instrument operation takes just the touch of a finger, even while wearing gloves.



Safety with STEP

Closed-tube sampling with the STEP module minimizes operator interaction with the sample, making for a safer workplace. Patient samples remain sealed in blood collection tubes.

Smart Tool. Smart Lab.

Run your Physician Office Lab more efficiently, more economically – and more intelligently – with the ACE Axcel. The third generation of the ACE chemistry system improves both patient care and your bottom line.

Smart Features

- Touch screen technology for instinctive control
- Easy-to-use graphical user interface
- Internet connectivity allows for technical support, remote access, and laboratory integration
- Optional barcode scanner automates sample identification and streamlines workflow

More Intelligence

- Run panels, profiles, or single tests, in any combination at any time
- Create custom panels to meet the needs of your practice
- STAT interrupt allows users to load and prioritize STAT samples during operation for immediate diagnosis and treatment
- Auto Rerun and Dilution ensures fast, accurate reporting of abnormal test results without operator intervention
- System calibration automatically monitored; 30-day calibration interval for most assays
- Seamless integration with Electronic Health Records via Alfa Wassermann's Alfa LIS or other laboratory information systems

Greater Productivity

- On-board reagent refrigeration maintains specimen and reagent integrity; reduces specimen and reagent handling
- Liquid, ready-to-use reagents eliminate prep time, improving operator productivity
- Automatic reagent inventory management
- Self-contained system in a small footprint; ACE Axcel needs no dedicated waste disposal or water system

A Decade of **Award-Winning** Customer Service



For 10 consecutive years, Alfa Wassermann has received the NorthFace ScoreboardSM Award for Excellence in Customer Satisfaction. An objective benchmark for service and support, the NorthFace Award represents the true voice of the customer.

Alfa Wassermann is the market leader in clinical chemistry systems for the Physician Office Laboratory. We take pride in providing the highest level of customer service. **We listen. We care. And it shows.**

Your Alfa Wassermann team includes a nationwide network of company-trained engineers and support personnel who provide 24/7 technical support. We bring more than 35 years of manufacturing and service excellence to build and support market-leading clinical chemistry systems.

Now, through Alfa AssistTM, we enhance your user experience. Web-enabled, remote access facilitates proactive, consultative support and educational services.

Alfa Wassermann analyzers help you:

- Screen for diseases
- Diagnose and treat sooner
- Monitor progress and adjust treatments as necessary

In today's competitive environment, we recognize that operating a successful and cost-effective practice requires diagnostic testing that is smart, fast, reliable, and accurate. ACE Axcel is the intelligent choice for your smart lab.



For more information or to schedule a demo, please call **1-800-220-4488** or visit **www.ACEAxcel.com**.

ALFA WASSERMANN
Diagnostic Technologies, LLC

Alfa Wassermann Diagnostic Technologies

4 Henderson Drive
West Caldwell, NJ 07006
Tel: 1-800-220-4488
www.ACEAxcel.com
info@aceaxcel.com