



Hassle-Free PBMCs in Just 15 Minutes

## SepMate™ Makes PBMC Isolation Effortless

Anyone familiar with PBMC isolation knows the frustrations of density gradient layering: layer too quickly, fumble the tube or leave the brake on during centrifugation, and your sample goes to waste.

SepMate™ is a new tube that enables **consistent and hassle-free PBMC isolations in just 15 minutes**. The unique SepMate™ insert lets you quickly layer blood over the density gradient medium (e.g. Ficoll-Paque™, Lymphoprep™), and prevents the layers from mixing. After centrifugation with the brake on, PBMCs are simply poured into a fresh tube.



### Ready·Sep·Go with SepMate™

#### EASY

Say goodbye to slow and laborious sample layering over the density gradient medium.

#### FAST

Centrifuge for just 10 minutes with the brake on.

#### CONSISTENT

Eliminate errors and minimize variability between separations.

PRODUCT	CATALOG #	QUANTITY
SepMate™-50	15450	20 tubes
	15460	100 tubes



Request a Sample:  
[www.stemcell.com/sepmatesample](http://www.stemcell.com/sepmatesample)



Scientists Helping Scientists™ | [WWW.STEMCELL.COM](http://WWW.STEMCELL.COM)

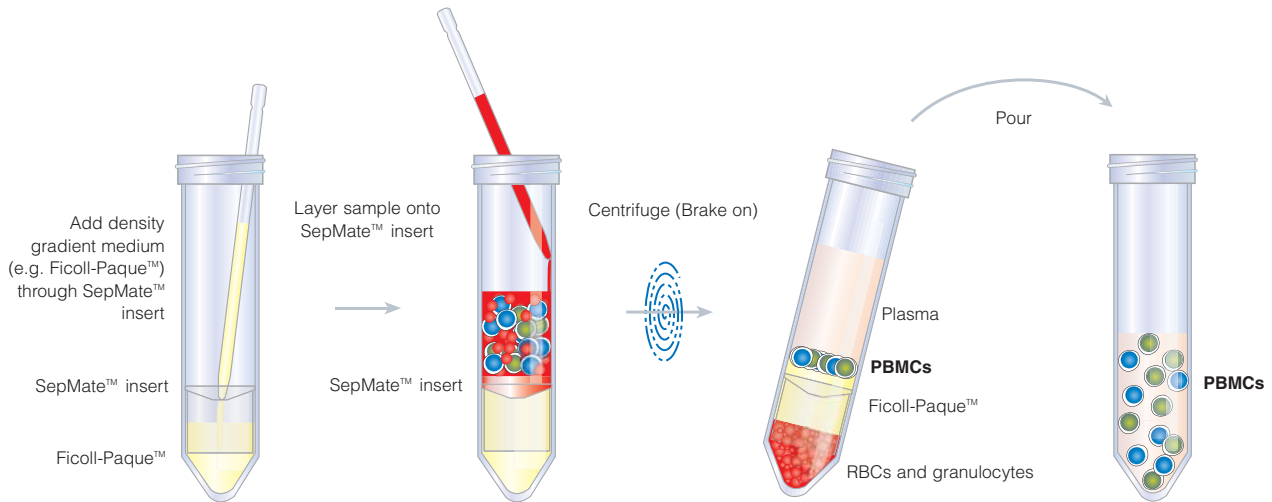
CATALOG #29048 | VERSION 1.1.1 | MAY 2012

TOLL-FREE T. 1 800 667 0322 • T. +1 604 877 0713 • TOLL-FREE F. 1 800 567 2899 • F. +1 604 877 0704  
[ORDERS@STEMCELL.COM](mailto:ORDERS@STEMCELL.COM) • [INFO@STEMCELL.COM](mailto:INFO@STEMCELL.COM) • FOR FULL CONTACT DETAILS WORLDWIDE VISIT OUR WEBSITE

FOR RESEARCH USE ONLY. NOT FOR THERAPEUTIC OR DIAGNOSTIC USE.

## Isolate PBMCs from Whole Blood in Just 15 Minutes with SepMate™

SepMate™ is the fast, easy and foolproof way to carry out density gradient centrifugation. The SepMate™ insert eliminates the need for painstakingly slow density gradient layering and PBMC harvesting, allowing you to obtain purified, viable and functional mononuclear cells in just 15 minutes.



**15 Minutes**

## Isolate Highly Purified Cell Subsets Directly from Whole Blood in 25 Minutes

### Combine SepMate™ and RosetteSep™ to Isolate Specific Cell Types in One Easy Step.

To isolate purified cell subsets from whole blood, simply incubate your sample with the appropriate RosetteSep™ cocktail for 10 minutes before SepMate™ separation.

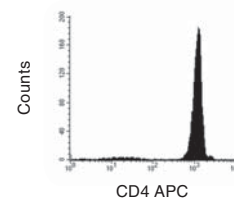
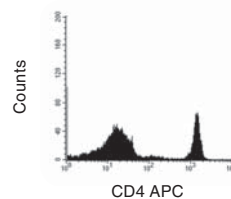
During centrifugation unwanted leukocytes pellet along with RBC, leaving untouched and highly purified target cells in the supernatant.

No columns or magnets are necessary. Just incubate, spin, and pour off purified cells.

Human CD4<sup>+</sup> T Cell Isolation using SepMate™-50 and RosetteSep™ Human CD4<sup>+</sup> T Cell Enrichment Cocktail.

Start: 37% CD4<sup>+</sup> Cells

Enriched: 96% CD4<sup>+</sup> Cells



For more information on RosetteSep™ cocktails, please visit [www.rosettesep.com](http://www.rosettesep.com).