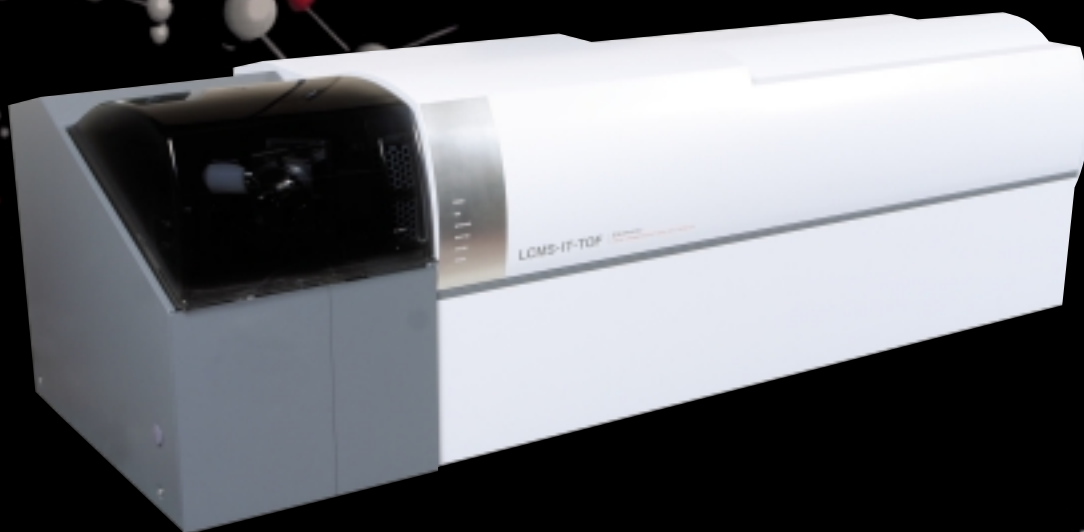


Shimadzu Liquid Chromatograph Mass Spectrometer

# LCMS-IT-TOF

High Resolution  
High Accuracy  
High Throughput  
High Sensitivity



## ● High Resolution and High Accuracy

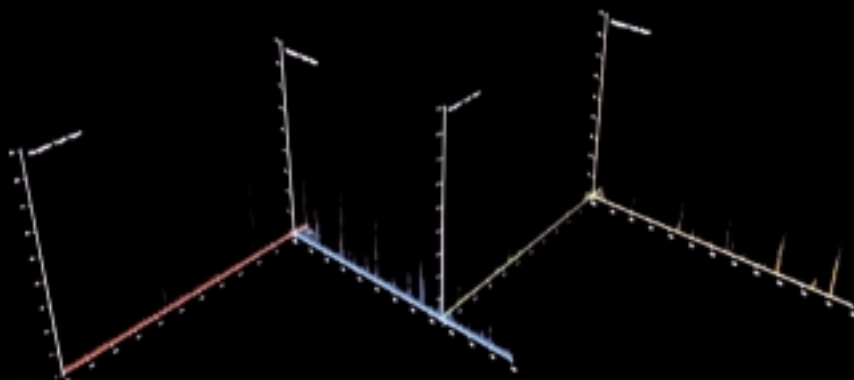
DSR (Dual-Stage Reflectron) (Patent Pending) and BIE (Ballistic Ion Extraction) (Patent Pending) achieve high resolution ( $R > 10,000$ ) and high accuracy (5 ppm) in all modes: MS, MS/MS, and MS/MS/MS.

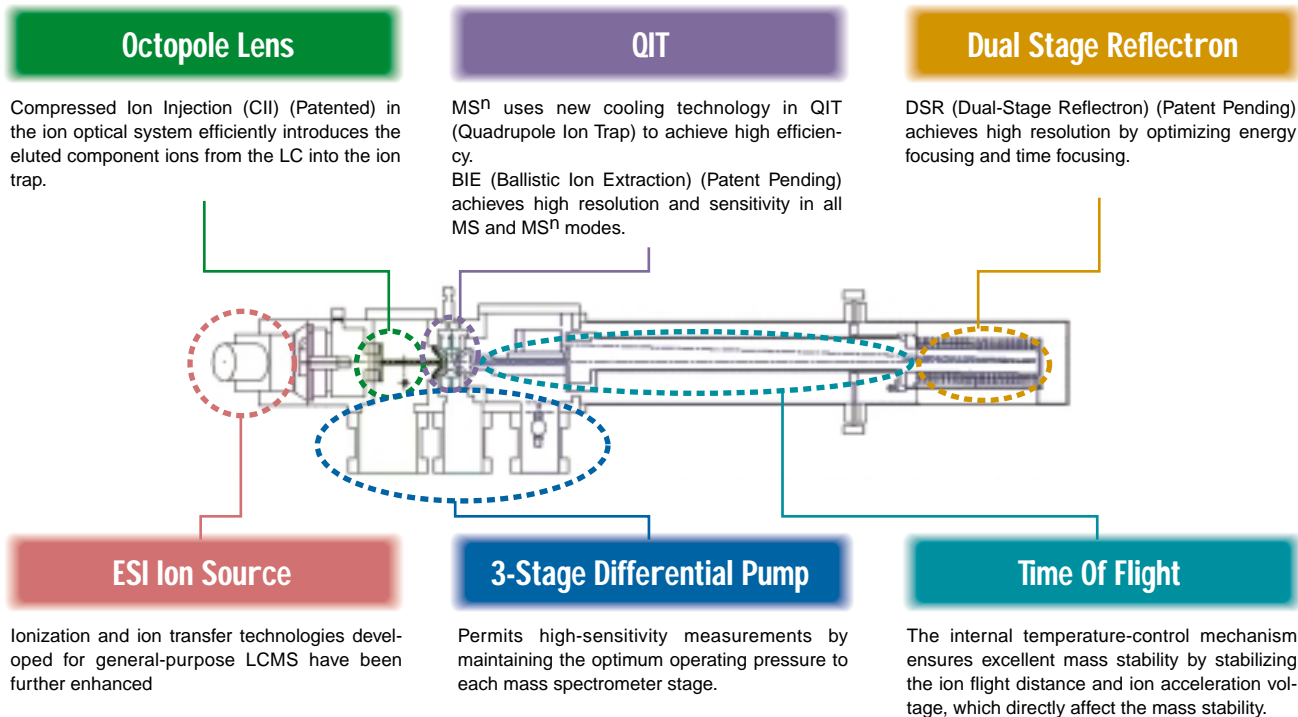
## ● High Throughput

The highest-speed scanning performance of any hybrid MS for structural analysis: switching between the positive ion mode and negative ion mode in 0.1 sec. and 0.1 sec. spectrum measurement period.

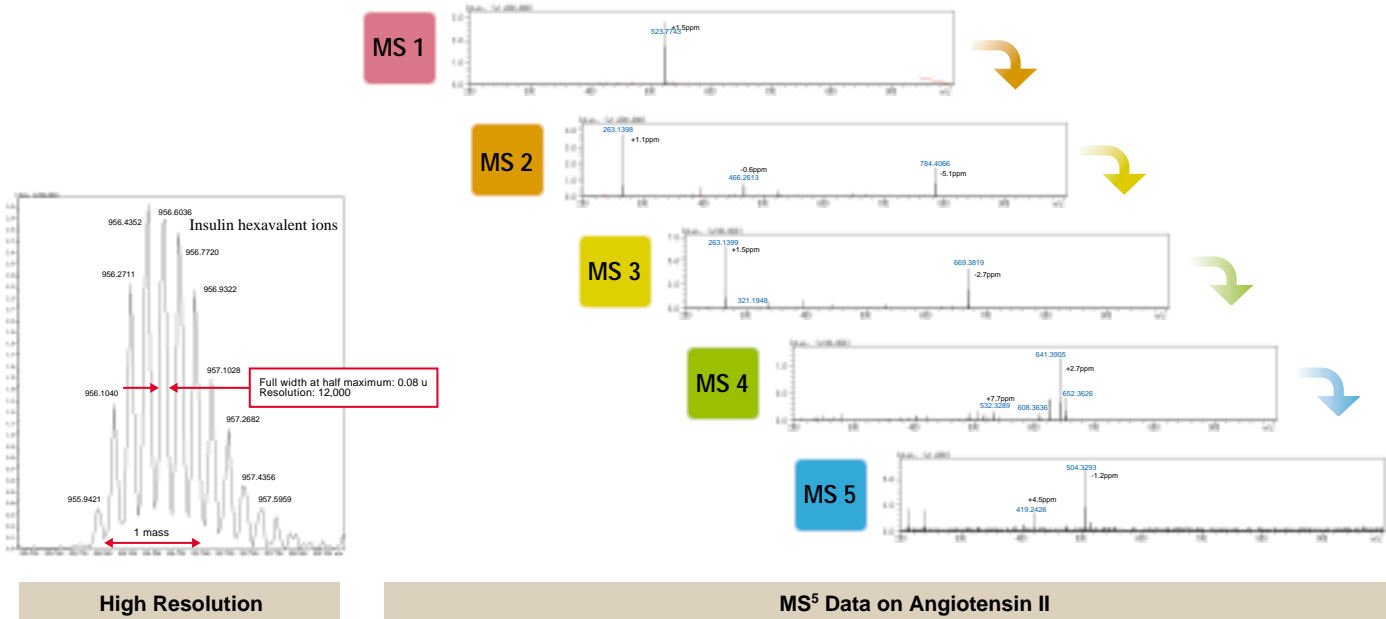
## ● High Sensitivity

Compressed Ion Injection (CII) (Patented) in the ion optical system efficiently introduces ions into the ion trap and achieves high  $MS^n$  sensitivity.





**MS<sup>n</sup>** Support for MS<sup>10</sup>; Compressed Ion Injection (Patented) efficiently introduces ions into the ion trap and enhances sensitivity.



**SHIMADZU CORPORATION. International Marketing Division**  
 3, Kanda-Nishikicho 1-chome, Chiyoda-ku, Tokyo 101-8448, Japan Phone: 81(3)3219-5641 Fax: 81(3)3219-5710  
 Cable Add.: SHIMADZU TOKYO

**SHIMADZU SCIENTIFIC INSTRUMENTS, INC.**  
 7102 Riverwood Drive, Columbia, Maryland 21046, U.S.A.  
 Phone: 1(410)381-1227 Fax: 1(410)381-1222 Toll Free: 1(800)477-1227

**SHIMADZU DEUTSCHLAND GmbH**  
 Albert-Hahn-Strasse 6-10, D-47269 Duisburg, F.R. Germany Phone: 49(203)7687-0 Fax: 49(203)766625

**SHIMADZU (ASIA PACIFIC) PTE LTD.**  
 16 Science Park Drive #01-01 Singapore Science Park, Singapore 118227, Republic of Singapore  
 Phone: 65-778 6280 Fax: 65-779 2935

**SHIMADZU SCIENTIFIC INSTRUMENTS (OCEANIA) PTY. LTD.**  
 Units F, 10-16 South Street Rydalmere N.S.W. 2116, Australia  
 Phone: 61(2)9684-4200 Fax: 61(2)9684-4055

**SHIMADZU DO BRASIL COMÉRCIO LTDA.**  
 Avenida Marquês de São Vicente, 1771, Barra Funda CEP: 01139-003-São Paulo-SP, Brasil  
 Phone: (55)11-3611-1688 Fax: (55)11-3611-2209

**SHIMADZU (HONG KONG) LIMITED**  
 Suite 1028 Ocean Center, Harbour City, Tsim Sha Tsui, Kowloon HONG KONG  
 Phone: (852)2375-4979 Fax: (852)2199-7438

**Overseas Offices**  
 Istanbul, Beijing, Shanghai, Guangzhou, Shenyang, Chengdu, Moscow

**URL <http://www.shimadzu.com>**