



## GC/MSD Pesticide Analyzer

**Simplify and accelerate your pesticide screening**



### **Eliminate the need for tedious manual method development with a fully configured and factory-tested Analyzer.**

Based on Agilent's 5975C Series GC/MSD and 7890A GC System, our user-friendly GC/MSD Pesticide Analyzer quickly screens and quantitates large numbers of pesticides and endocrine disruptors in a single analysis. Its screening methods conform to the latest worldwide pesticide testing requirements. With inlet, column, capillary flow device, and software tools all installed and configured in the factory, and the Analyzer pre-tested for pesticide analysis – you can save weeks of method development.

### **Screen *more* pesticides... in *less* time**

Agilent's GC/MSD Pesticide Analyzer makes use of productivity-boosting GC/MS technologies that allow you to:

- Increase the number of targets screened
- Reduce the analysis time required per sample
- Perform a complete screening and quantitation in 2-3 minutes
- Produce consistent, high-quality results from day one

### **The following components are included with Agilent's Pesticide Analyzer – saving you time and money.**

- Pesticide checkout samples
- Retention Time locked HP-5MS column ensuring reliable database matching
- Free-trial QuEChERS sample preparation kit
- Video training tutorials for easy learning of more advanced Analyzer features
- Quick-start guide and Application Note that show you how to run the screening method provided with the Analyzer
- CD-ROM with analysis methods, data files, and report



Our measure is your success.



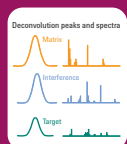
These built-in features make it *faster* and *easier* to screen large numbers of target compounds in complex matrices



**Multimode Inlet (MMI) with large-volume injection** enhances trace-level detection and adds flexibility by including standard split/splitless capabilities.



**Retention Time Locking (RTL)** for consistent retention times after column maintenance and easy matching with the 927-compound Pesticides and Endocrine Disruptors database.



**Deconvolution Reporting Software (DRS)** for fast data review in 2-3 minutes per sample, with screening and quantitation in one run.



**Capillary Flow Technology (CFT) and backflush** promote shorter run times, low chemical background, longer column life, and less frequent source cleaning to improve uptime.



**Agilent SampliQ QuEChERS sample preparation kits** let you quickly and easily extract pesticide residues from complex food matrices.

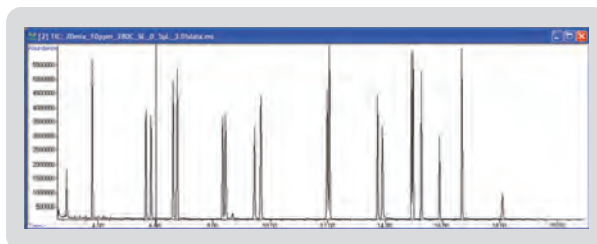
## Put your lab on the productivity fast track.

Contact your local Agilent Representative or Agilent Authorized Distributor

Call **800-227-9770** (in the U.S. or Canada) or visit [www.agilent.com/chem/appkits](http://www.agilent.com/chem/appkits)

This information is subject to change without notice.  
© Agilent Technologies, Inc. 2010  
Printed in U.S.A., January 31, 2010  
5990-5310EN

The Pesticide Analyzer will start your lab on the *fast track* to better broad-range screening



Running the pesticides checkout sample: A quick-start guide included with Agilent's GC/MSD Pesticide Analyzer shows you how to load the pesticide method, relock the method to get consistent retention times, and run the checkout sample.

MSD Deconvolution Report  
Sample Name: Checkout mix 10ppm  
Data File: C:\msdchem1\DATA\20mix\_10ppm\_280C\_SL\_0\_5ul\_3.D  
Date/Time: 3:24:06 PM Wednesday, January 20, 2010

Adjacent Peak Subtraction = 1  
Resolution = High  
Sensitivity = High  
Shape Requirements = Medium

The NIST library was searched for the components that were found in the AMDIS target library.

R.T.	Cas #	Compound Name	Amount (ng)		AMDIS		NIST	
			Chem station	AMDIS	Match	R.T. Diff sec.	Reverse Match	Hit Num.
2.668	91203	Naphthalene	0.44	0.32	77	-0.3	84	2
2.9081	82737	Dichlorvos	8.93	8.16	98	-0.9	92	1
3.078	89838	Thymol	0.06	0.05	72	2.2	86	19
3.0807	3228033	Promecarb artifact [5-isopropyl-3-methylphenol]			69	-11.0		
3.0807	98544	Phenol, p-tert-butyl-					81	1
3.7946	7788347	Mevinphos	23.91	23.2	99	-0.4	92	2
3.9860	208968	Acenaphthylene	0.06	0.07	90	0.9	83	2
5.6438	55283686	Ethalfuralin	1.44	1.34	95	0.3	92	1
5.8263	1582098	Trifluralin	6.62	6.36	96	0.9	91	1
6.5910	1912249	Atrazine	14.05	12.86	97	1.4	92	1
6.6805	139402	Propazine			71	-0.1	74	1
6.6920	319657	BHC beta isomer			55	11.0	82	5
6.7348	58899	Lindane	9.37	8.52	98	0.5	91	4
6.9259	85018	Phenanthrene			57	1.8	80	2
8.3062	5596130	Chlorpyrifos Methyl	10.6	9.46	97	1.2	92	1

A DRS Checkout Report: You can analyze your results quickly using Deconvolution Reporting Software (DRS) and the RTL Pesticides database.

**Ordering information:** Order an Agilent 5975C Series GC/MSD along with an Agilent 7890A GC system with one of the following options:

- **SP1 7890-0456: Pesticide DRS Screening GC/MSD Analyzer**
- **SP1 7890-0457: Japanese Positive List DRS Screening GC/MSD Analyzer**



**Agilent Technologies**