

### Do you experience these challenges with your single pump system?

- Difficulty running a reliable low-pressure gradient?
- Varying blending accuracy and precision with changes in system backpressure?
- A complex pump system configuration?

### Make no compromises with the Waters single pump gradient system

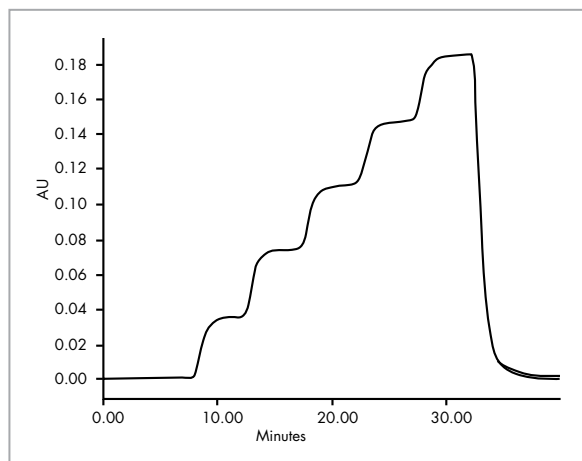
The Waters 600E Multisolvent Delivery System offers no-compromise performance in a true single pump design. By combining two Waters patented technologies – time-proven solvent delivery and our innovative Random Phase Synchronization (RPS™) software – the 600E Multisolvent Delivery System offers you unmatched performance compared with any other single pump gradient system.

Until now, the design of low-pressure gradient systems was based on tradeoffs. To maintain the simplicity of a true single pump configuration, instrument manufacturers accepted inferior performance – blending accuracy and precision would vary with changes in system backpressure and flow rate. To compensate, some manufacturers relied on additional mechanical complexity, but the extra pumps and plumbing began to obscure the original benefits of the low-pressure concept – reliability, convenience, and cost.



## The workhorse reliability of a Waters® pump

Waters now sets the standard for solvent delivery with our proven pump design. Extremely reliable pump mechanics, improved flow path components, and the simplicity of the single pump design means less maintenance and more uptime.



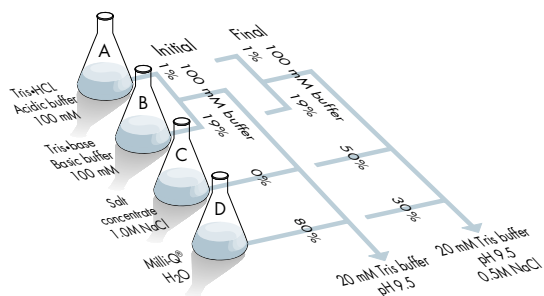
This overlay of four-step gradients, 0% to 10, in 2% increments, illustrates the compositional accuracy and precision of the Waters 600E system.

## Compositional accuracy and precision— independent of backpressure and flow rates

Waters patented RPS software ensures compositionally accurate and precise eluent blends at all flow rates and system backpressures, even at compositional extremes.

The overlay above shows multiple runs of 2% step gradient profiles. Compositional accuracy is better than  $\pm 0.5\%$ ; compositional precision is better than  $\pm 0.15\%$ . This performance is independent of flow rate and backpressure.

And with Waters Auto•Blend™ capability, you can automatically blend up to four eluents in accurate proportions, run any sequence of isocratic combinations, binary, tertiary, and quaternary gradients for automated methods development, column clean up, system flushing, sample prep, etc.



The Waters Auto•Blend mode will blend up to four eluents to perform isocratic, step, continuous gradient, or flow program applications.

## Ideal for analytical and semi-preparative HPLC

The Waters 600E System gives you unmatched accuracy and precision throughout the full analytical flow range for HPLC. An exceptionally wide total flow range from 0.01 to 20.00 mL/min (with 45.00 mL/min optional) gives you the versatility to perform analytical and semi-preparative separations, as exemplified by the Waters Delta 600 System.

## Versatile programming platforms for easy system use

Centralize your operations through our single-workstation solution with either the 600 controller or with Waters Empower™ or Masslynx™ software.

For comprehensive programming of all pump, autosampler, and UV and/or RI detector parameters directly from the controller keypad, the PowerLine™ software embedded in the 600 controller allows you to store up to 15 completed instrument methods for easy method retrieval.

By linking your 600E System to Empower or Masslynx software, you can take advantage of complete system control and information management. The power of an Empower system means that all system operations are programmed, controlled, documented, and linked to data derived from your analytical method.

### Purification of Synthetic Neurotensin

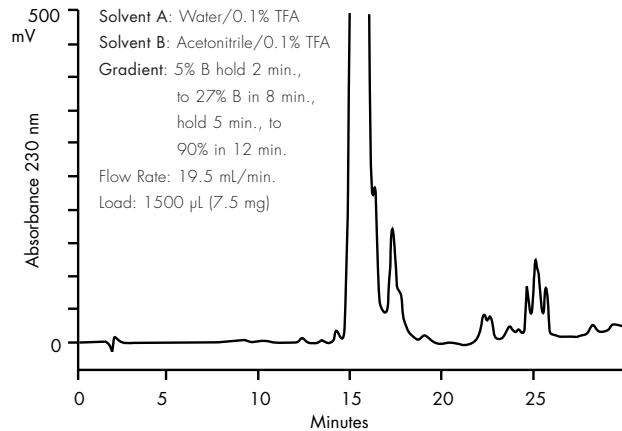
Column: Delta Pak™ C18 300Å, 15µ (25 x 100 mm)  
Prep-Pak® cartridge

Sample: Neurotensin

Solvent A: Water/0.1% TFA  
Solvent B: Acetonitrile/0.1% TFA

Gradient: 5% B hold 2 min.,  
to 27% B in 8 min.,  
hold 5 min., to  
90% in 12 min.

Flow Rate: 19.5 mL/min.  
Load: 1500 µL (7.5 mg)



*The broad flow rate range available with the Waters 600E system enables method optimization on an analytical scale, followed by semi-preparative purification with no system modifications. The Delta 600 configuration makes this transition easy.*



Delta 600

## Sales Offices:

**AUSTRIA AND EXPORT** (CENTRAL EUROPE, CIS, MIDDLE EAST, INDIA AND INDIA SUBCONTINENT) 43 1 8771807

**AUSTRALIA** 2 9933 1777

**BELGIUM AND LUXEMBOURG**  
02 726 1000

**BRAZIL** 55 11 5543 7788

**CANADA** 800 252 4752 X2205

**CIS** 095 931 9193

**CZECH REPUBLIC** 2 617 11384

**DENMARK** 46 59 8080

**FINLAND** 09 506 4140

**FRANCE** 33 1 30 48 72 00

**GERMANY** 06196 40 06 00

**HONG KONG** 29 64 1800

**HUNGARY** 061 350 5086

**INDIA** 80 837 1900

**IRELAND** 1 4481500

**ITALY** 02 274211

**JAPAN** 3 3471 7191

**KOREA** 82 2 3284 1300

**MALAYSIA** 3 7804 8600

**MEXICO** 5255 5524 7636

**THE NETHERLANDS** 76 508 7200

**NORWAY** 6 384 6050

**PEOPLES REPUBLIC OF CHINA –  
BEIJING** 86 10 8451 8918

**POLAND** 022 833 4400

**PUERTO RICO** 787 747 8445

**SINGAPORE** 65 6278 7997

**SPAIN** 93 600 9300

**SWEDEN** 46 8 555 11 500

**SWITZERLAND** 62 889 2030

**TAIWAN** 2 2543 1898

**UK** 44 208 238 6100

### **U.S.A. AND ALL OTHER COUNTRIES:**

WATERS CORPORATION

34 Maple St.

Milford, MA 01757 U.S.A.

T: 508 478 2000

F: 508 872 1990

[www.waters.com](http://www.waters.com)

## World-renowned support and services

Waters Connections® provides the solutions you need to maintain maximum uptime across your Waters systems.

- Analytical Instrumentation and Software Services include Total Assurance Plans that extend and enhance the original warranty you receive when you buy a Waters product. These plans minimize the level of insurance investment and deliver the value you need to avoid costly and time-consuming system downtime.
- Connections Compliance Services provide you with timely and cost-efficient solutions for your regulatory compliance challenges. Use our Compliance Services to effectively train and certify personnel in equipment and regulatory requirements for cGMP/GLP compliance, significantly reducing operating costs.
- Connections University is the center of our Educational Services, providing extensive HPLC and LC/MS training and education at your site, at our corporate headquarters or at our local offices around the world.

Representatives of our global Customer Assurance Organization, trained and certified in all our products and current in HPLC and LC/MS applications, are available in person, on the phone, via FAX or at [www.waters.com](http://www.waters.com) to answer questions and provide you with around-the-clock support and information services.

# Waters

**Opt-In!** My Profile  
[www.waters.com](http://www.waters.com)

