

High Performance Mass Detection

AXIMA Assurance™



LRQ 4005852/B

Founded in 1875, Shimadzu Corporation, a leader in the development of advanced technologies, has a distinguished history of innovation built on the foundation of contributing to society through science and technology. We maintain a global network of sales, service, technical support and applications centers on six continents, and have established long-term relationships with a host of highly trained distributors located in over 100 countries. For information about Shimadzu, and to contact your local office, please visit our Web site at www.shimadzu.com



Kratos Analytical Ltd.
 Wharfside, Trafford Wharf Road, Manchester M17 1GP, UK
 Phone: +44 161 888 4400 Fax: +44 161 888 4402
 URL <http://www.shimadzu.com/an/>

Company names, product/service names and logos used in this publication are trademarks and trade names of Shimadzu Corporation and its affiliates. In this publication, those names and logos may be used without trademark symbol "TM" or "®".
 Third-party trademarks and trade names may be used in this publication to refer to either the entities claiming the marks and names or their products. Shimadzu Corporation disclaims any proprietary interest in trademarks and trade names other than its own.
 For Research Use Only. Not for use in diagnostic procedures. The contents of this publication are subject to change without notice. Shimadzu does not assume any responsibility or liability for any damage, whether direct or indirect, relating to, or arising out of the use of this publication.

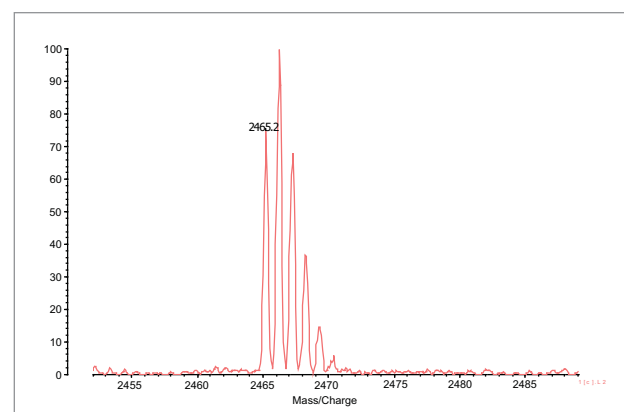
Axima Assurance™ - Flexibility and Quality

The Axima Assurance™ is designed with the general analytical and life science laboratory in mind. Incorporating a variable repetition rate 50Hz N₂ laser, the system provides high quality rapid MALDI mass spectra and an array of software tools for data processing and reporting.

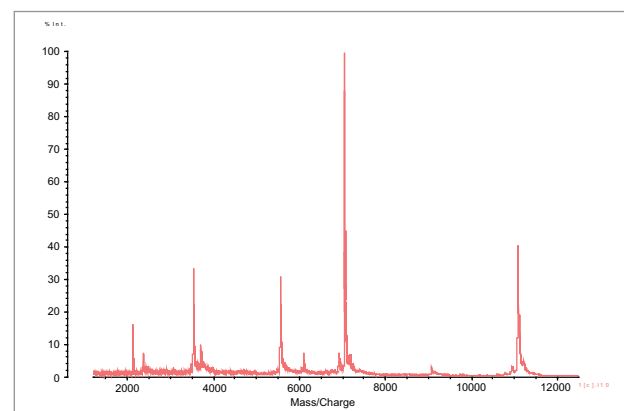
Positive and negative ion modes are included as standard, allowing greater flexibility and extending the compound categories that may be analysed. The system also incorporates a patented beam blanker to optionally remove unwanted low mass ions and prevent detector saturation.

High sensitivity is achieved using near-axis laser irradiation and advanced ion optics for enhanced ion transmission. Pulsed extraction of ions from the MALDI source improves resolution and enhanced calibration algorithms with easy to use software provide more accurate data.

Unparalleled flexibility is achieved by a variety of sample target formats including standard microtitre plate format 96 or 384 well targets. Fleximass™ microscope slides (plain or 48 well targets) and a wide variety of adaptors for unconventional sample layouts are also available. The standard sample target formats are fully compatible with common laboratory robots, including the CHIP™.



ACTH 18-39 demonstrating linear resolution of > 6000 FWHM



Typical oligonucleotide spectrum

Axima Assurance™ - Software solutions

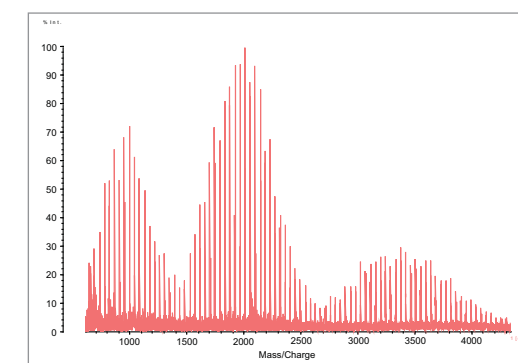
Intuitive software incorporating data dependent workflows for achieving the maximum result with minimum user input, ideal for novice and expert users alike.

The Axima Assurance™ is controlled by the Launchpad™ suite of software, common to all Axima mass spectrometers, permitting manual or fully automated operation, facilitating the seamless analysis of as few or as many samples as required. Intelligent optimization of acquisition conditions may be employed permitting auto-tuning for specific samples.

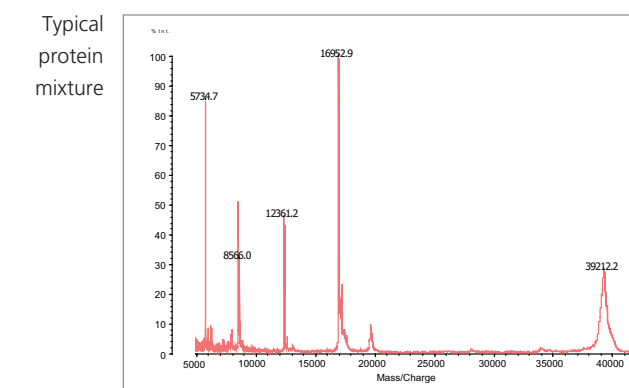
Ideally suited for high throughput QA/QC application areas, for example

- Oligonucleotides/primers
- Synthetic peptides/proteins
- Polymer analysis
- Small molecules

Application-centric data processing software packages are available to provide solutions to many commonly asked questions.



Synthetic polymer spectrum



Typical protein mixture

Synthetic Polymers

Polymers and copolymers can be characterised using our unique polymer software, PolymerAnalysis™, providing useful structural information and statistics in a text report format.

Oligonucleotides

OligoAnalysis™ offers fully automated QC analysis of large numbers of oligonucleotides or peptides, complete with a report indicating the presence or absence of the target compound, an estimate of the purity and occurrence of known contaminants, adducts or truncated/extended analogues.

Biomarker Discovery - Tissue imaging section

This exciting area encompassing clinical sample screening and tissue imaging/profiling is comprehensively addressed using automated acquisition methods and refined data processing. Protein/peptide biomarkers, drugs and their metabolites can be rapidly screened directly from tissue sections and their location mapped and visualized using integrated software tools. Complete integration with the CHIP™ allows fully automated wizard-driven tissue imaging experiments. Data can also easily be exported to 3rd party processing software, including BioMap and Non Linear Dynamics PG600.

All data can also be viewed in alternative packages to allow comparative experiments using a number of standard data formats including ASCII, m/zXML and m/zData.

System support

All Axima systems can be fully supported throughout their lifetime using sophisticated web based service diagnostics and real time remote monitoring. Highly trained specialist local service support engineers are available to install and maintain Axima mass spectrometers. A wide range of service contracts are available, catering for all budgets and requirements, including IQ/OQ environments and high throughput QA laboratories.

Full training courses are offered by MALDI experts at our regional corporate training centers or at the customer site and may be tailored for specific requirements and applications.